



ELECTRONIC COPY

LG816634083
Report verification at igi.org

LABORATORY GROWN DIAMOND REPORT

July 7, 2026
IGI Report Number **LG816634083**
Description **LABORATORY GROWN DIAMOND**
Shape and Cutting Style **ROUND BRILLIANT**
Measurements **9.10 - 9.16 X 5.72 MM**

GRADING RESULTS

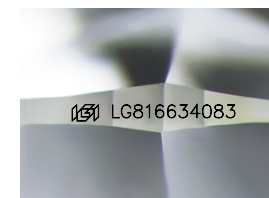
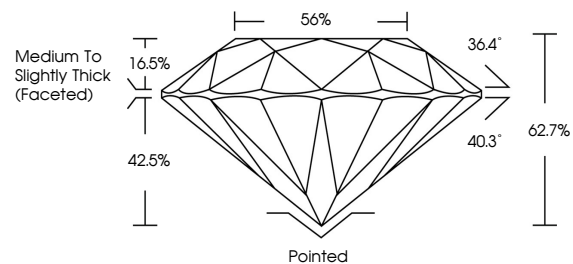
Carat Weight **2.98 CARATS**
Color Grade **FANCY LIGHT YELLOW**
Clarity Grade **VS 2**
Cut Grade **EXCELLENT**

ADDITIONAL GRADING INFORMATION

Polish **EXCELLENT**
Symmetry **EXCELLENT**
Fluorescence **VERY SLIGHT**
Inscription(s) **LG816634083**

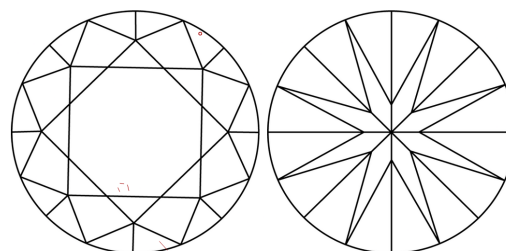
Comments: This Laboratory Grown Diamond was created by Chemical Vapor Deposition (CVD) growth process.
Indications of post-growth treatment.

PROPORTIONS



Sample Image Used

CLARITY CHARACTERISTICS



KEY TO SYMBOLS

Red symbols indicate internal characteristics.
Green symbols indicate external characteristics.

COLOR

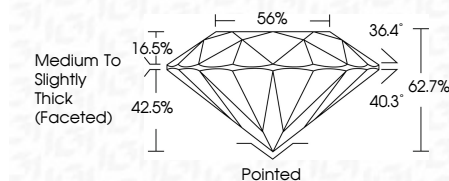
D E F G H I J Faint Very Light Light

CLARITY

FL	IF	VS ¹⁻²	VS ¹⁻²	SI ¹⁻²	I ¹⁻³
Flawless	Internally Flawless	Very Very Slightly Included	Very Slightly Included	Slightly Included	Included



July 7, 2026
IGI Report Number **LG816634083**
Description **LABORATORY GROWN DIAMOND**
Shape and Cutting Style **ROUND BRILLIANT**
Measurements **9.10 - 9.16 X 5.72 MM**
GRADING RESULTS
Carat Weight **2.98 CARATS**
Color Grade **FANCY LIGHT YELLOW**
Clarity Grade **VS 2**
Cut Grade **EXCELLENT**



ADDITIONAL GRADING INFORMATION

Polish **EXCELLENT**
Symmetry **EXCELLENT**
Fluorescence **VERY SLIGHT**
Inscription(s) **LG816634083**
Comments: This Laboratory Grown Diamond was created by Chemical Vapor Deposition (CVD) growth process.
Indications of post-growth treatment.



July 7, 2026
IGI Report No LG816634083
ROUND BRILLIANT
9.10 - 9.16 X 5.72 MM
2.98 CARATS
FANCY LIGHT YELLOW
VS 2
EXCELLENT
62.7%
56%
Medium To Slightly Thick (Faceted)
Pointed
EXCELLENT
EXCELLENT
VERY SLIGHT
EXCELLENT
IGI LG816634083
Comments: This Laboratory Grown Diamond was created by Chemical Vapor Deposition (CVD) growth process.
Indications of post-growth treatment.