



ELECTRONIC COPY

LG816634078
Report verification at igi.org

LABORATORY GROWN DIAMOND REPORT

July 7, 2026
IGI Report Number **LG816634078**
Description **LABORATORY GROWN DIAMOND**
Shape and Cutting Style **ROUND BRILLIANT**
Measurements **8.25 - 8.32 X 4.70 MM**

GRADING RESULTS

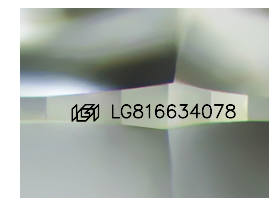
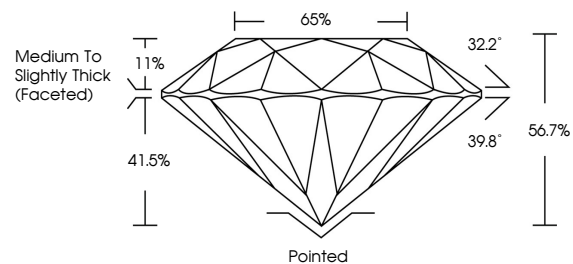
Carat Weight **2.00 CARATS**
Color Grade **FANCY LIGHT YELLOW**
Clarity Grade **VVS 2**
Cut Grade **VERY GOOD**

ADDITIONAL GRADING INFORMATION

Polish **EXCELLENT**
Symmetry **VERY GOOD**
Fluorescence **VERY SLIGHT**
Inscription(s) **IGI LG816634078**

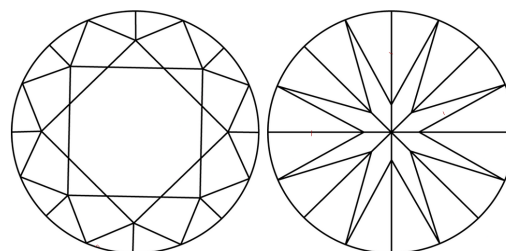
Comments: This Laboratory Grown Diamond was created by Chemical Vapor Deposition (CVD) growth process.
Indications of post-growth treatment.

PROPORTIONS



Sample Image Used

CLARITY CHARACTERISTICS



KEY TO SYMBOLS

Red symbols indicate internal characteristics.
Green symbols indicate external characteristics.

COLOR

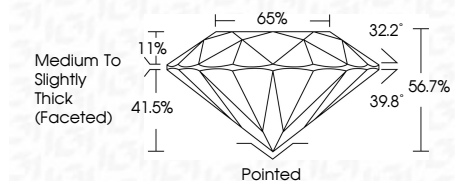
D E F G H I J Faint Very Light Light

CLARITY

FL	IF	VVS ¹⁻²	VS ¹⁻²	SI ¹⁻²	I ¹⁻³
Flawless	Internally Flawless	Very Very Slightly Included	Very Slightly Included	Slightly Included	Included



July 7, 2026
IGI Report Number **LG816634078**
Description **LABORATORY GROWN DIAMOND**
Shape and Cutting Style **ROUND BRILLIANT**
Measurements **8.25 - 8.32 X 4.70 MM**
GRADING RESULTS
Carat Weight **2.00 CARATS**
Color Grade **FANCY LIGHT YELLOW**
Clarity Grade **VVS 2**
Cut Grade **VERY GOOD**



ADDITIONAL GRADING INFORMATION

Polish **EXCELLENT**
Symmetry **VERY GOOD**
Fluorescence **VERY SLIGHT**
Inscription(s) **IGI LG816634078**
Comments: This Laboratory Grown Diamond was created by Chemical Vapor Deposition (CVD) growth process.
Indications of post-growth treatment.



July 7, 2026
IGI Report No LG816634078
ROUND BRILLIANT
8.25 - 8.32 X 4.70 MM
2.00 CARATS
FANCY LIGHT YELLOW
VVS 2
VERY GOOD
56.7%
65%
Medium To Slightly Thick (Faceted)
Pointed
EXCELLENT
VERY GOOD
VERY SLIGHT
IGI LG816634078
Comments: This Laboratory Grown Diamond was created by Chemical Vapor Deposition (CVD) growth process.
Indications of post-growth treatment.