



**ELECTRONIC COPY**

LG816629660  
Report verification at igi.org



July 2, 2026  
IGI Report Number **LG816629660**  
Description **LABORATORY GROWN DIAMOND**  
Shape and Cutting Style **ROUND BRILLIANT**  
Measurements **9.76 - 9.83 X 6.00 MM**  
**GRADING RESULTS**  
Carat Weight **3.55 CARATS**  
Color Grade **E**  
Clarity Grade **VS 2**  
Cut Grade **IDEAL**

July 2, 2026  
IGI Report Number **LG816629660**  
Description **LABORATORY GROWN DIAMOND**  
Shape and Cutting Style **ROUND BRILLIANT**  
Measurements **9.76 - 9.83 X 6.00 MM**

**GRADING RESULTS**

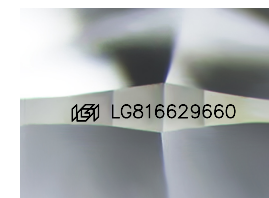
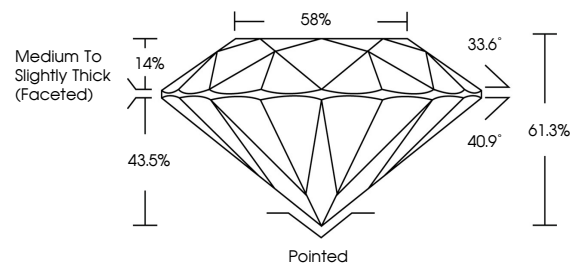
Carat Weight **3.55 CARATS**  
Color Grade **E**  
Clarity Grade **VS 2**  
Cut Grade **IDEAL**

**ADDITIONAL GRADING INFORMATION**

Polish **EXCELLENT**  
Symmetry **EXCELLENT**  
Fluorescence **NONE**  
Inscription(s) **IGI LG816629660**

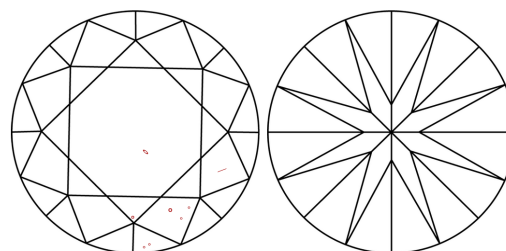
Comments: This Laboratory Grown Diamond was created by Chemical Vapor Deposition (CVD) growth process.  
Type IIa

**PROPORTIONS**



Sample Image Used

**CLARITY CHARACTERISTICS**



**KEY TO SYMBOLS**

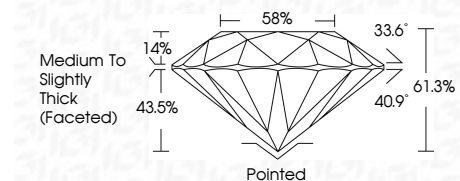
Red symbols indicate internal characteristics.  
Green symbols indicate external characteristics.

**COLOR**

D E F G H I J Faint Very Light Light

**CLARITY**

FL	IF	VS <sup>1-2</sup>	VS <sup>1-2</sup>	SI <sup>1-2</sup>	I <sup>1-3</sup>
Flawless	Internally Flawless	Very Very Slightly Included	Very Slightly Included	Slightly Included	Included



**ADDITIONAL GRADING INFORMATION**

Polish **EXCELLENT**  
Symmetry **EXCELLENT**  
Fluorescence **NONE**  
Inscription(s) **IGI LG816629660**  
Comments: This Laboratory Grown Diamond was created by Chemical Vapor Deposition (CVD) growth process.  
Type IIa



July 2, 2026  
IGI Report No LG816629660  
ROUND BRILLIANT  
9.76 - 9.83 X 6.00 MM  
3.55 CARATS  
E  
VS 2  
IDEAL  
61.3%  
58%  
Medium To Slightly Thick (Faceted)  
Pointed  
EXCELLENT  
EXCELLENT  
NONE  
IGI LG816629660  
Comments: This Laboratory Grown Diamond was created by Chemical Vapor Deposition (CVD) growth process.  
Type IIa