



**ELECTRONIC COPY**

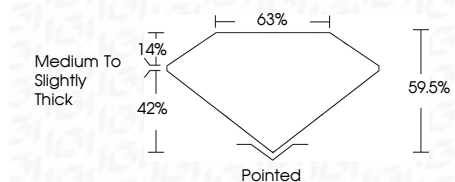
LG815649480  
Report verification at igi.org



July 2, 2026  
IGI Report Number **LG815649480**  
Description **LABORATORY GROWN DIAMOND**  
Shape and Cutting Style **KITE MODIFIED BRILLIANT**  
Measurements **12.77 X 7.49 X 4.46 MM**

**GRADING RESULTS**

Carat Weight **2.05 CARATS**  
Color Grade **E**  
Clarity Grade **VVS 1**



**ADDITIONAL GRADING INFORMATION**

Polish **EXCELLENT**  
Symmetry **EXCELLENT**  
Fluorescence **NONE**  
Inscription(s) **(IGI) LG815649480**  
Comments: This Laboratory Grown Diamond was created by Chemical Vapor Deposition (CVD) growth process. Type IIa



**IGI**

July 2, 2026  
IGI Report No LG815649480  
**KITE MODIFIED BRILLIANT**  
12.77 X 7.49 X 4.46 MM  
2.05 CARATS  
E  
VVS 1  
63%  
42%  
Medium to Slightly Thick  
Pointed  
EXCELLENT  
EXCELLENT  
NONE  
(IGI) LG815649480  
Comments: This Laboratory Grown Diamond was created by Chemical Vapor Deposition (CVD) growth process. Type IIa

July 2, 2026  
IGI Report Number **LG815649480**  
Description **LABORATORY GROWN DIAMOND**  
Shape and Cutting Style **KITE MODIFIED BRILLIANT**  
Measurements **12.77 X 7.49 X 4.46 MM**

**GRADING RESULTS**

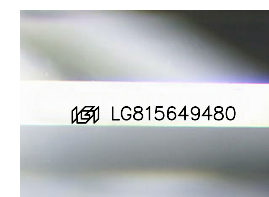
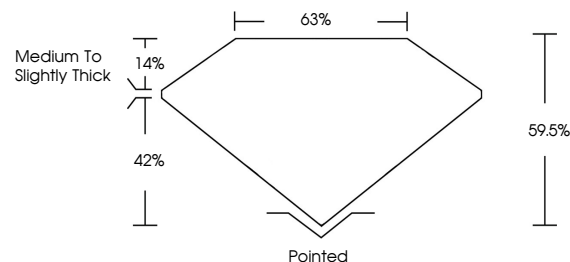
Carat Weight **2.05 CARATS**  
Color Grade **E**  
Clarity Grade **VVS 1**

**ADDITIONAL GRADING INFORMATION**

Polish **EXCELLENT**  
Symmetry **EXCELLENT**  
Fluorescence **NONE**  
Inscription(s) **(IGI) LG815649480**

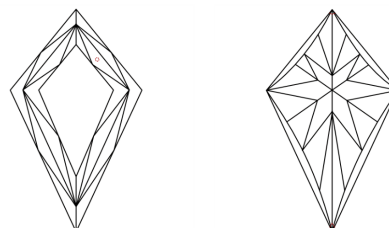
Comments: This Laboratory Grown Diamond was created by Chemical Vapor Deposition (CVD) growth process. Type IIa

**PROPORTIONS**



Sample Image Used

**CLARITY CHARACTERISTICS**



**KEY TO SYMBOLS**

Red symbols indicate internal characteristics.  
Green symbols indicate external characteristics.

**COLOR**

D E F G H I J Faint Very Light Light

**CLARITY**

FL	IF	VVS <sup>1-2</sup>	VS <sup>1-2</sup>	SI <sup>1-2</sup>	I <sup>1-3</sup>
Flawless	Internally Flawless	Very Very Slightly Included	Very Slightly Included	Slightly Included	Included

