



ELECTRONIC COPY

LG815610106
Report verification at igi.org



July 4, 2026
IGI Report Number **LG815610106**
Description **LABORATORY GROWN DIAMOND**
Shape and Cutting Style **CUSHION MODIFIED BRILLIANT**
Measurements **10.14 X 9.57 X 6.76 MM**
GRADING RESULTS
Carat Weight **6.07 CARATS**
Color Grade **FANCY VIVID YELLOW**
Clarity Grade **VS 2**

LABORATORY GROWN DIAMOND REPORT

July 4, 2026
IGI Report Number **LG815610106**
Description **LABORATORY GROWN DIAMOND**
Shape and Cutting Style **CUSHION MODIFIED BRILLIANT**
Measurements **10.14 X 9.57 X 6.76 MM**

GRADING RESULTS

Carat Weight **6.07 CARATS**
Color Grade **FANCY VIVID YELLOW**
Clarity Grade **VS 2**

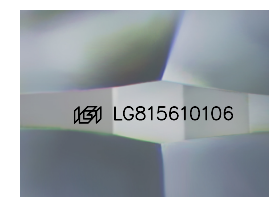
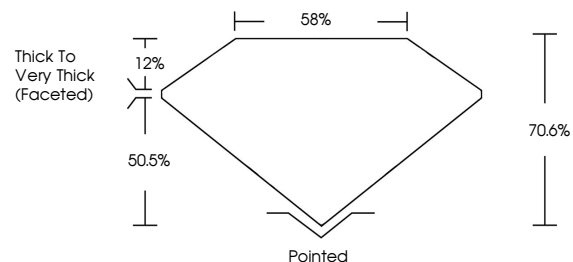
ADDITIONAL GRADING INFORMATION

Polish **EXCELLENT**
Symmetry **EXCELLENT**
Fluorescence **NONE**
Inscription(s) **IGI LG815610106**

Comments: This Laboratory Grown Diamond was created by Chemical Vapor Deposition (CVD) growth process.

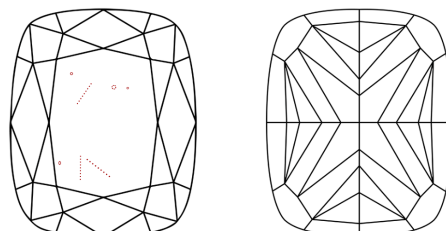
Secondary color: Grey

PROPORTIONS



Sample Image Used

CLARITY CHARACTERISTICS



KEY TO SYMBOLS

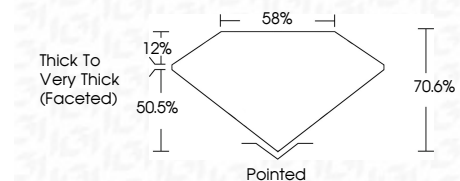
Red symbols indicate internal characteristics.
Green symbols indicate external characteristics.

COLOR

D E F G H I J Faint Very Light Light

CLARITY

FL	IF	VS ¹⁻²	VS ¹⁻²	SI ¹⁻²	I ¹⁻³
Flawless	Internally Flawless	Very Very Slightly Included	Very Slightly Included	Slightly Included	Included



ADDITIONAL GRADING INFORMATION

Polish **EXCELLENT**
Symmetry **EXCELLENT**
Fluorescence **NONE**
Inscription(s) **IGI LG815610106**
Comments: This Laboratory Grown Diamond was created by Chemical Vapor Deposition (CVD) growth process.
Secondary color: Grey



July 4, 2026
IGI Report No LG815610106
CUSHION MODIFIED BRILLIANT
6.07 CARATS
6.07 CARATS
Carat Weight
Color Grade **FANCY VIVID YELLOW**
Color Grade
Clarity Grade **VS 2**
Clarity Grade
Table **58%**
Table
Girdle **Thick to Very Thick (Faceted)**
Girdle
Culet **Pointed**
Culet
Polish **EXCELLENT**
Polish
Symmetry **EXCELLENT**
Symmetry
Fluorescence **NONE**
Fluorescence
Inscription(s) **IGI LG815610106**
Inscription(s)
Comments: This Laboratory Grown Diamond was created by Chemical Vapor Deposition (CVD) growth process.
Secondary color: Grey