



**LABORATORY GROWN DIAMOND REPORT**

July 2, 2026  
 IGI Report Number **LG814642146**  
 Description **LABORATORY GROWN DIAMOND**  
 Shape and Cutting Style **ROUND BRILLIANT**  
 Measurements **5.90 - 5.92 X 3.53 MM**

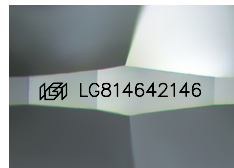
**GRADING RESULTS**

Carat Weight **0.77 CARAT**  
 Color Grade **E**  
 Clarity Grade **VS 1**  
 Cut Grade **EXCELLENT**

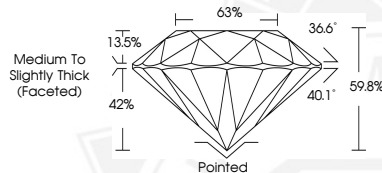
**ADDITIONAL GRADING INFORMATION**

Polish **VERY GOOD**  
 Symmetry **VERY GOOD**  
 Fluorescence **NONE**  
 Inscription(s) **IGI LG814642146**

Comments: As Grown - No indication of post-growth treatment. This Laboratory Grown Diamond was created by High Pressure High Temperature (HPHT) growth process. Type II



Sample Image Used



July 2, 2026  
 IGI Report Number **LG814642146**  
 ROUND BRILLIANT  
 LABORATORY GROWN DIAMOND  
 5.90 - 5.92 X 3.53 MM  
 Carat Weight **0.77 CARAT**  
 Color Grade **E**  
 Clarity Grade **VS 1**  
 Cut Grade **EXCELLENT**  
 Polish **VERY GOOD**  
 Symmetry **VERY GOOD**  
 Fluorescence **NONE**  
 Inscription(s) **IGI LG814642146**

Comments: As Grown - No indication of post-growth treatment. This Laboratory Grown Diamond was created by High Pressure High Temperature (HPHT) growth process. Type II



July 2, 2026  
 IGI Report Number **LG814642146**  
 ROUND BRILLIANT  
 LABORATORY GROWN DIAMOND  
 5.90 - 5.92 X 3.53 MM  
 Carat Weight **0.77 CARAT**  
 Color Grade **E**  
 Clarity Grade **VS 1**  
 Cut Grade **EXCELLENT**  
 Polish **VERY GOOD**  
 Symmetry **VERY GOOD**  
 Fluorescence **NONE**  
 Inscription(s) **IGI LG814642146**

Comments: As Grown - No indication of post-growth treatment. This Laboratory Grown Diamond was created by High Pressure High Temperature (HPHT) growth process. Type II



THIS DOCUMENT WAS PRODUCED WITH THE FOLLOWING SECURITY MEASURES: SPECIAL DOCUMENT PAPER, INK SCREENS, WATERMARK, BACKGROUND DESIGNS, HOLOGRAM AND OTHER SECURITY FEATURES NOT LISTED AND DO EXCEED DOCUMENT SECURITY INDUSTRY GUIDELINES.