



ELECTRONIC COPY

LG814640698
Report verification at igi.org



July 1, 2026
IGI Report Number LG814640698
Description LABORATORY GROWN DIAMOND
Shape and Cutting Style ROUND BRILLIANT
Measurements 8.14 - 8.17 X 5.01 MM
GRADING RESULTS
Carat Weight 2.06 CARATS
Color Grade E
Clarity Grade VS 1
Cut Grade EXCELLENT

July 1, 2026
IGI Report Number LG814640698
Description LABORATORY GROWN DIAMOND
Shape and Cutting Style ROUND BRILLIANT
Measurements 8.14 - 8.17 X 5.01 MM

GRADING RESULTS

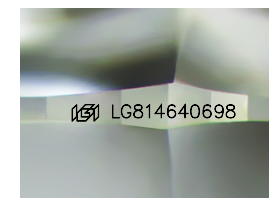
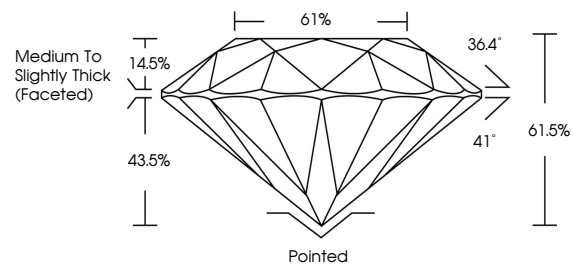
Carat Weight 2.06 CARATS
Color Grade E
Clarity Grade VS 1
Cut Grade EXCELLENT

ADDITIONAL GRADING INFORMATION

Polish VERY GOOD
Symmetry EXCELLENT
Fluorescence NONE
Inscription(s) IGI LG814640698

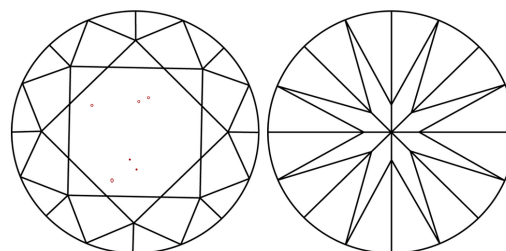
Comments: This Laboratory Grown Diamond was created by Chemical Vapor Deposition (CVD) growth process. Type IIa

PROPORTIONS



Sample Image Used

CLARITY CHARACTERISTICS



KEY TO SYMBOLS

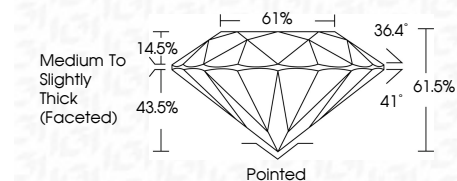
Red symbols indicate internal characteristics.
Green symbols indicate external characteristics.

COLOR

D E F G H I J Faint Very Light Light

CLARITY

FL IF VS 1-2 VS 2-3 SI 1-2 I 1-3
Flawless Internally Flawless Very Very Slightly Included Very Slightly Included Slightly Included Included



ADDITIONAL GRADING INFORMATION

Polish VERY GOOD
Symmetry EXCELLENT
Fluorescence NONE
Inscription(s) IGI LG814640698
Comments: This Laboratory Grown Diamond was created by Chemical Vapor Deposition (CVD) growth process. Type IIa



July 1, 2026
IGI Report No LG814640698
ROUND BRILLIANT
8.14 - 8.17 X 5.01 MM
2.06 CARATS
E
EXCELLENT
VS 1
61%
61%
Medium To Slightly Thick (Faceted)
Pointed
VERY GOOD
EXCELLENT
NONE
IGI LG814640698
Comments: This Laboratory Grown Diamond was created by Chemical Vapor Deposition (CVD) growth process. Type IIa