



**ELECTRONIC COPY**

LG814640657  
Report verification at igi.org



July 1, 2026  
IGI Report Number **LG814640657**  
Description **LABORATORY GROWN DIAMOND**  
Shape and Cutting Style **ROUND BRILLIANT**  
Measurements **6.60 - 6.64 X 3.97 MM**  
**GRADING RESULTS**  
Carat Weight **1.07 CARAT**  
Color Grade **D**  
Clarity Grade **VVS 2**  
Cut Grade **EXCELLENT**

July 1, 2026  
IGI Report Number **LG814640657**  
Description **LABORATORY GROWN DIAMOND**  
Shape and Cutting Style **ROUND BRILLIANT**  
Measurements **6.60 - 6.64 X 3.97 MM**

**GRADING RESULTS**

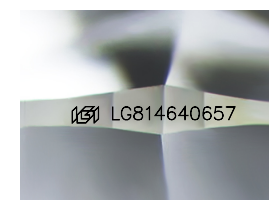
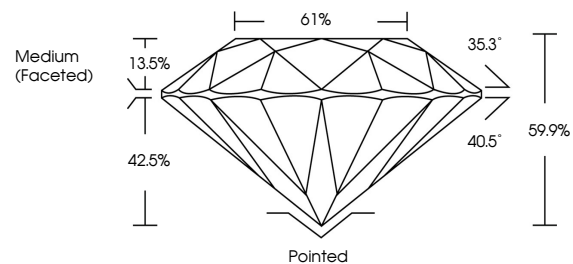
Carat Weight **1.07 CARAT**  
Color Grade **D**  
Clarity Grade **VVS 2**  
Cut Grade **EXCELLENT**

**ADDITIONAL GRADING INFORMATION**

Polish **VERY GOOD**  
Symmetry **EXCELLENT**  
Fluorescence **NONE**  
Inscription(s) **IGI LG814640657**

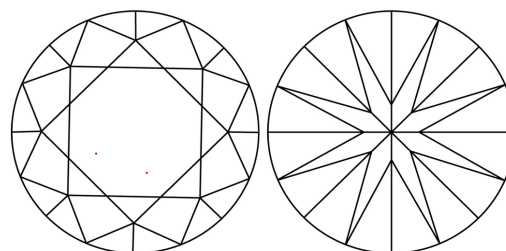
Comments: This Laboratory Grown Diamond was created by Chemical Vapor Deposition (CVD) growth process.  
Type IIa

**PROPORTIONS**



Sample Image Used

**CLARITY CHARACTERISTICS**



**KEY TO SYMBOLS**

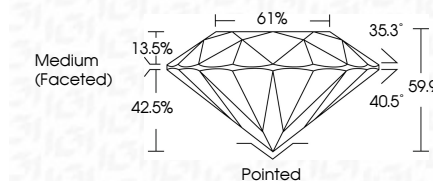
Red symbols indicate internal characteristics.  
Green symbols indicate external characteristics.

**COLOR**

D E F G H I J Faint Very Light Light

**CLARITY**

FL	IF	VVS <sup>1-2</sup>	VS <sup>1-2</sup>	SI <sup>1-2</sup>	I <sup>1-3</sup>
Flawless	Internally Flawless	Very Very Slightly Included	Very Slightly Included	Slightly Included	Included



**ADDITIONAL GRADING INFORMATION**

Polish **VERY GOOD**  
Symmetry **EXCELLENT**  
Fluorescence **NONE**  
Inscription(s) **IGI LG814640657**  
Comments: This Laboratory Grown Diamond was created by Chemical Vapor Deposition (CVD) growth process.  
Type IIa



July 1, 2026  
IGI Report No LG814640657  
**ROUND BRILLIANT**  
6.60 - 6.64 X 3.97 MM  
1.07 CARAT  
Color Grade **D**  
Clarity Grade **VVS 2**  
Depth **59.9%**  
Table **61%**  
Girdle **Medium (Faceted)**  
Culet **Pointed**  
Polish **VERY GOOD**  
Symmetry **EXCELLENT**  
Fluorescence **NONE**  
Inscription(s) **IGI LG814640657**  
Comments: This Laboratory Grown Diamond was created by Chemical Vapor Deposition (CVD) growth process.  
Type IIa