



ELECTRONIC COPY

LG814640620
Report verification at igi.org



July 1, 2026

IGI Report Number **LG814640620**

Description **LABORATORY GROWN DIAMOND**

Shape and Cutting Style **ROUND BRILLIANT**

Measurements **6.31 - 6.35 X 4.03 MM**

GRADING RESULTS

Carat Weight **1.00 CARAT**

Color Grade **D**

Clarity Grade **VVS 2**

Cut Grade **EXCELLENT**

July 1, 2026
IGI Report Number **LG814640620**
Description **LABORATORY GROWN DIAMOND**
Shape and Cutting Style **ROUND BRILLIANT**
Measurements **6.31 - 6.35 X 4.03 MM**

GRADING RESULTS

Carat Weight **1.00 CARAT**

Color Grade **D**

Clarity Grade **VVS 2**

Cut Grade **EXCELLENT**

ADDITIONAL GRADING INFORMATION

Polish **VERY GOOD**

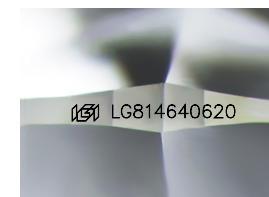
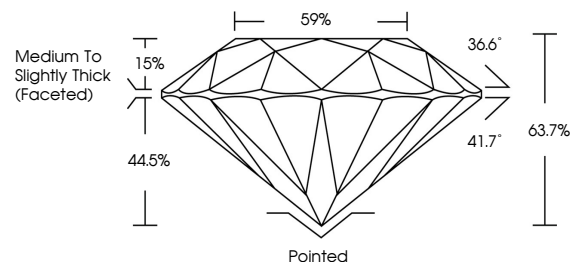
Symmetry **VERY GOOD**

Fluorescence **NONE**

Inscription(s) **IGI LG814640620**

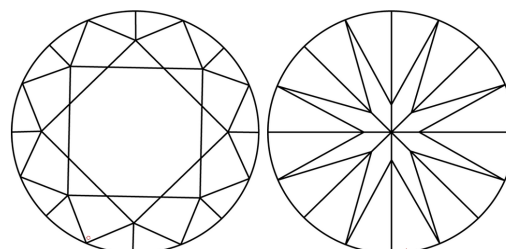
Comments: This Laboratory Grown Diamond was created by Chemical Vapor Deposition (CVD) growth process.
Type IIa

PROPORTIONS



Sample Image Used

CLARITY CHARACTERISTICS



KEY TO SYMBOLS

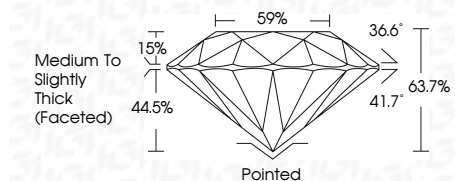
Red symbols indicate internal characteristics.
Green symbols indicate external characteristics.

COLOR

D E F G H I J Faint Very Light Light

CLARITY

FL	IF	VVS ¹⁻²	VS ¹⁻²	SI ¹⁻²	I ¹⁻³
Flawless	Internally Flawless	Very Very Slightly Included	Very Slightly Included	Slightly Included	Included



ADDITIONAL GRADING INFORMATION

Polish **VERY GOOD**

Symmetry **VERY GOOD**

Fluorescence **NONE**

Inscription(s) **IGI LG814640620**

Comments: This Laboratory Grown Diamond was created by Chemical Vapor Deposition (CVD) growth process.
Type IIa



IGI



July 1, 2026
IGI Report No LG814640620
ROUND BRILLIANT
6.31 - 6.35 X 4.03 MM
Carat Weight 1.00 CARAT
Color Grade D
Clarity Grade VVS 2
Depth 63.7%
Table 59%
Girdle Medium To Slightly Thick (Faceted)
Culet Pointed
Polish VERY GOOD
Symmetry VERY GOOD
Fluorescence NONE
Inscriptions(s) IGI LG814640620
Comments: This Laboratory Grown Diamond was created by Chemical Vapor Deposition (CVD) growth process.
Type IIa