



**ELECTRONIC COPY**

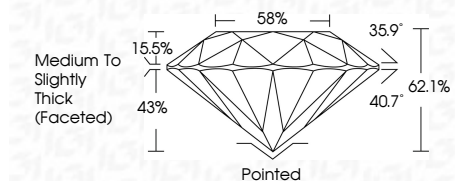
LG814640615  
Report verification at igi.org



July 1, 2026  
IGI Report Number **LG814640615**  
Description **LABORATORY GROWN DIAMOND**  
Shape and Cutting Style **ROUND BRILLIANT**  
Measurements **6.48 - 6.51 X 4.04 MM**

**GRADING RESULTS**

Carat Weight **1.06 CARAT**  
Color Grade **D**  
Clarity Grade **VVS 2**  
Cut Grade **IDEAL**



**ADDITIONAL GRADING INFORMATION**

Polish **VERY GOOD**  
Symmetry **VERY GOOD**  
Fluorescence **NONE**  
Inscription(s) **IGI LG814640615**  
Comments: This Laboratory Grown Diamond was created by Chemical Vapor Deposition (CVD) growth process. Type IIa



July 1, 2026  
IGI Report No LG814640615  
**ROUND BRILLIANT**  
6.48 - 6.51 X 4.04 MM  
1.06 CARAT  
D  
VVS 2  
IDEAL  
62.1%  
58%  
Medium To Slightly Thick (Faceted)  
Pointed  
VERY GOOD  
VERY GOOD  
VERY GOOD  
NONE  
IGI LG814640615  
Comments: This Laboratory Grown Diamond was created by Chemical Vapor Deposition (CVD) growth process. Type IIa

July 1, 2026  
IGI Report Number **LG814640615**  
Description **LABORATORY GROWN DIAMOND**  
Shape and Cutting Style **ROUND BRILLIANT**  
Measurements **6.48 - 6.51 X 4.04 MM**

**GRADING RESULTS**

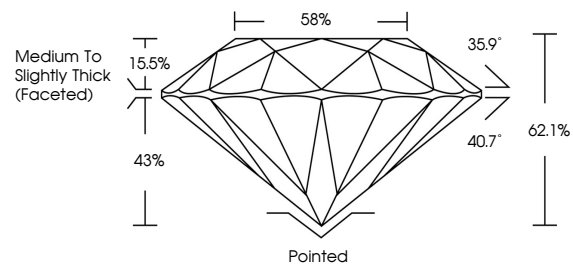
Carat Weight **1.06 CARAT**  
Color Grade **D**  
Clarity Grade **VVS 2**  
Cut Grade **IDEAL**

**ADDITIONAL GRADING INFORMATION**

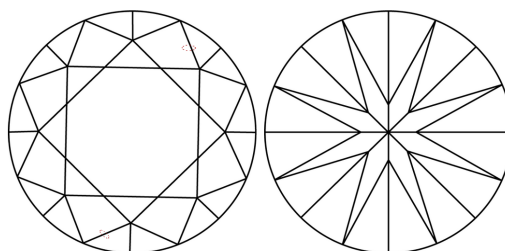
Polish **VERY GOOD**  
Symmetry **VERY GOOD**  
Fluorescence **NONE**  
Inscription(s) **IGI LG814640615**

Comments: This Laboratory Grown Diamond was created by Chemical Vapor Deposition (CVD) growth process. Type IIa

**PROPORTIONS**

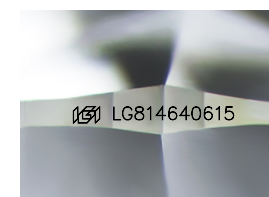


**CLARITY CHARACTERISTICS**



**KEY TO SYMBOLS**

Red symbols indicate internal characteristics.  
Green symbols indicate external characteristics.



Sample Image Used

**COLOR**

D E F G H I J Faint Very Light Light

**CLARITY**

FL	IF	VVS <sup>1-2</sup>	VS <sup>1-2</sup>	SI <sup>1-2</sup>	I <sup>1-3</sup>
Flawless	Internally Flawless	Very Very Slightly Included	Very Slightly Included	Slightly Included	Included

