



ELECTRONIC COPY

LG814640610
Report verification at igi.org



July 1, 2026
IGI Report Number **LG814640610**
Description **LABORATORY GROWN DIAMOND**
Shape and Cutting Style **ROUND BRILLIANT**
Measurements **6.46 - 6.52 X 4.02 MM**
GRADING RESULTS
Carat Weight **1.06 CARAT**
Color Grade **D**
Clarity Grade **VVS 2**
Cut Grade **VERY GOOD**

July 1, 2026
IGI Report Number **LG814640610**
Description **LABORATORY GROWN DIAMOND**
Shape and Cutting Style **ROUND BRILLIANT**
Measurements **6.46 - 6.52 X 4.02 MM**

GRADING RESULTS

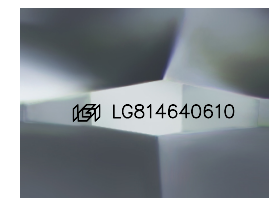
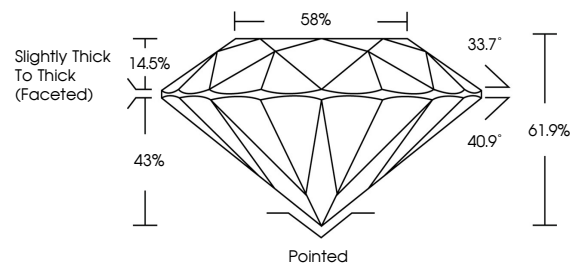
Carat Weight **1.06 CARAT**
Color Grade **D**
Clarity Grade **VVS 2**
Cut Grade **VERY GOOD**

ADDITIONAL GRADING INFORMATION

Polish **VERY GOOD**
Symmetry **VERY GOOD**
Fluorescence **NONE**
Inscription(s) **IGI LG814640610**

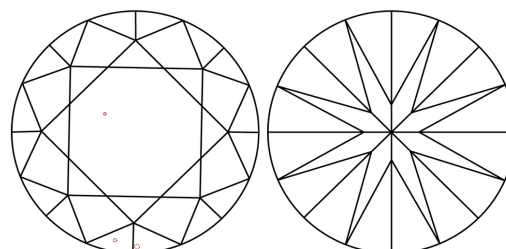
Comments: This Laboratory Grown Diamond was created by Chemical Vapor Deposition (CVD) growth process.
Type IIa

PROPORTIONS



Sample Image Used

CLARITY CHARACTERISTICS



KEY TO SYMBOLS

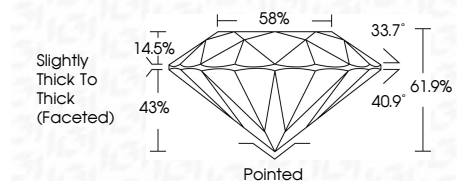
Red symbols indicate internal characteristics.
Green symbols indicate external characteristics.

COLOR

D E F G H I J Faint Very Light Light

CLARITY

FL	IF	VVS ¹⁻²	VS ¹⁻²	SI ¹⁻²	I ¹⁻³
Flawless	Internally Flawless	Very Very Slightly Included	Very Slightly Included	Slightly Included	Included



ADDITIONAL GRADING INFORMATION

Polish **VERY GOOD**
Symmetry **VERY GOOD**
Fluorescence **NONE**
Inscription(s) **IGI LG814640610**
Comments: This Laboratory Grown Diamond was created by Chemical Vapor Deposition (CVD) growth process.
Type IIa



July 1, 2026
IGI Report No LG814640610
ROUND BRILLIANT
6.46 - 6.52 X 4.02 MM
Carat Weight **1.06 CARAT**
Color Grade **D**
Clarity Grade **VVS 2**
Cut Grade **VERY GOOD**
Depth **61.9%**
Table **58%**
Girdle **Slightly Thick To Thick (Faceted)**
Culet **Pointed**
Polish **VERY GOOD**
Symmetry **VERY GOOD**
Fluorescence **NONE**
Inscription(s) **IGI LG814640610**
Comments: This Laboratory Grown Diamond was created by Chemical Vapor Deposition (CVD) growth process.
Type IIa