



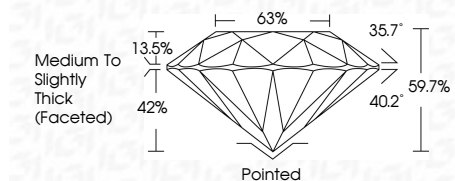
ELECTRONIC COPY

LG814640595
Report verification at igi.org



June 30, 2026
IGI Report Number **LG814640595**
Description **LABORATORY GROWN DIAMOND**
Shape and Cutting Style **ROUND BRILLIANT**
Measurements **8.08 - 8.13 X 4.84 MM**

GRADING RESULTS
Carat Weight **2.00 CARATS**
Color Grade **E**
Clarity Grade **VVS 2**
Cut Grade **EXCELLENT**



ADDITIONAL GRADING INFORMATION
Polish **VERY GOOD**
Symmetry **VERY GOOD**
Fluorescence **NONE**
Inscription(s) **(IGI) LG814640595**
Comments: This Laboratory Grown Diamond was created by Chemical Vapor Deposition (CVD) growth process. Type IIa



June 30, 2026
IGI Report No LG814640595
ROUND BRILLIANT
8.08 - 8.13 X 4.84 MM
2.00 CARATS
E
VVS 2
EXCELLENT
68%
Medium To Slightly Thick (Faceted)
Pointed
VERY GOOD
VERY GOOD
NONE
NONE
IGI LG814640595
Comments: This Laboratory Grown Diamond was created by Chemical Vapor Deposition (CVD) growth process. Type IIa

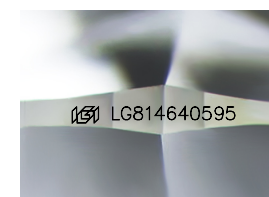
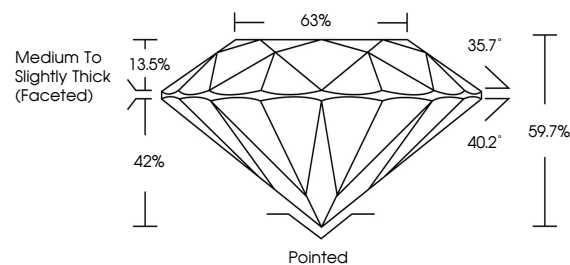
June 30, 2026
IGI Report Number **LG814640595**
Description **LABORATORY GROWN DIAMOND**
Shape and Cutting Style **ROUND BRILLIANT**
Measurements **8.08 - 8.13 X 4.84 MM**

GRADING RESULTS
Carat Weight **2.00 CARATS**
Color Grade **E**
Clarity Grade **VVS 2**
Cut Grade **EXCELLENT**

ADDITIONAL GRADING INFORMATION
Polish **VERY GOOD**
Symmetry **VERY GOOD**
Fluorescence **NONE**
Inscription(s) **(IGI) LG814640595**

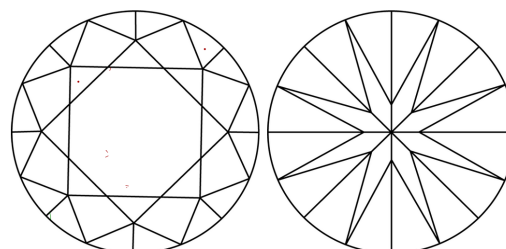
Comments: This Laboratory Grown Diamond was created by Chemical Vapor Deposition (CVD) growth process. Type IIa

PROPORTIONS



Sample Image Used

CLARITY CHARACTERISTICS



KEY TO SYMBOLS

Red symbols indicate internal characteristics.
Green symbols indicate external characteristics.

COLOR

D E F G H I J Faint Very Light Light

CLARITY

FL	IF	VVS ¹⁻²	VS ¹⁻²	SI ¹⁻²	I ¹⁻³
Flawless	Internally Flawless	Very Very Slightly Included	Very Slightly Included	Slightly Included	Included

