



**ELECTRONIC COPY**

LG814631630  
Report verification at igi.org

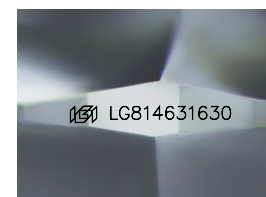
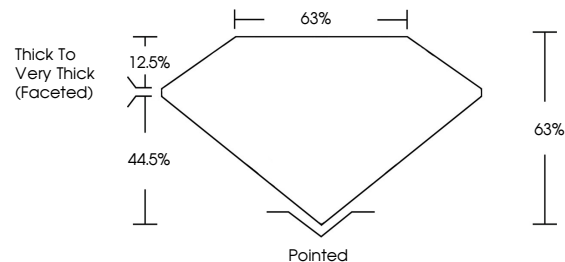


July 4, 2026  
IGI Report Number **LG814631630**  
Description **LABORATORY GROWN DIAMOND**  
Shape and Cutting Style **CUSHION MODIFIED BRILLIANT**  
Measurements **12.51 X 8.43 X 5.31 MM**  
**GRADING RESULTS**  
Carat Weight **5.10 CARATS**  
Color Grade **FANCY VIVID PINK**  
Clarity Grade **VS 1**

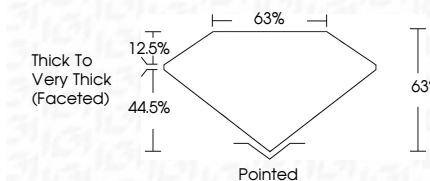
**LABORATORY GROWN DIAMOND REPORT**

July 4, 2026  
IGI Report Number **LG814631630**  
Description **LABORATORY GROWN DIAMOND**  
Shape and Cutting Style **CUSHION MODIFIED BRILLIANT**  
Measurements **12.51 X 8.43 X 5.31 MM**  
**GRADING RESULTS**  
Carat Weight **5.10 CARATS**  
Color Grade **FANCY VIVID PINK**  
Clarity Grade **VS 1**

**PROPORTIONS**



Sample Image Used



**ADDITIONAL GRADING INFORMATION**

Polish **VERY GOOD**  
Symmetry **EXCELLENT**  
Fluorescence **STRONG**  
Inscription(s) **IGI LG814631630**

Comments: This Laboratory Grown Diamond was created by Chemical Vapor Deposition (CVD) growth process.  
Indications of post-growth treatment.

**ADDITIONAL GRADING INFORMATION**

Polish **VERY GOOD**  
Symmetry **EXCELLENT**  
Fluorescence **STRONG**  
Inscription(s) **IGI LG814631630**  
Comments: This Laboratory Grown Diamond was created by Chemical Vapor Deposition (CVD) growth process.  
Indications of post-growth treatment.

**COLOR**

D E F G H I J Faint Very Light Light

**CLARITY**

FL	IF	VS <sup>1-2</sup>	VS <sup>1-2</sup>	SI <sup>1-2</sup>	I <sup>1-3</sup>
Flawless	Internally Flawless	Very Very Slightly Included	Very Slightly Included	Slightly Included	Included



**IGI**



July 4, 2026  
IGI Report No LG814631630  
**CUSHION MODIFIED BRILLIANT**  
12.51 X 8.43 X 5.31 MM  
5.10 CARATS  
FANCY VIVID PINK  
VS 1  
63%  
63%  
Thick to Very Thick (Faceted)  
Pointed  
Polish **VERY GOOD**  
Symmetry **EXCELLENT**  
Fluorescence **STRONG**  
Inscription(s) **IGI LG814631630**  
Comments: This Laboratory Grown Diamond was created by Chemical Vapor Deposition (CVD) growth process.  
Indications of post-growth treatment.