



**ELECTRONIC COPY**

LG814631020  
Report verification at igi.org



July 4, 2026  
IGI Report Number **LG814631020**  
Description **LABORATORY GROWN DIAMOND**  
Shape and Cutting Style **CUSHION MODIFIED BRILLIANT**  
Measurements **11.15 X 8.44 X 5.77 MM**  
**GRADING RESULTS**  
Carat Weight **5.02 CARATS**  
Color Grade **FANCY VIVID YELLOW**  
Clarity Grade **VS 2**

July 4, 2026  
IGI Report Number **LG814631020**  
Description **LABORATORY GROWN DIAMOND**  
Shape and Cutting Style **CUSHION MODIFIED BRILLIANT**  
Measurements **11.15 X 8.44 X 5.77 MM**

**GRADING RESULTS**

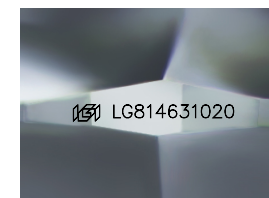
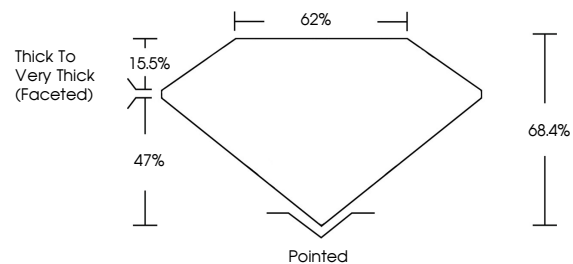
Carat Weight **5.02 CARATS**  
Color Grade **FANCY VIVID YELLOW**  
Clarity Grade **VS 2**

**ADDITIONAL GRADING INFORMATION**

Polish **EXCELLENT**  
Symmetry **EXCELLENT**  
Fluorescence **NONE**  
Inscription(s) **IGI LG814631020**

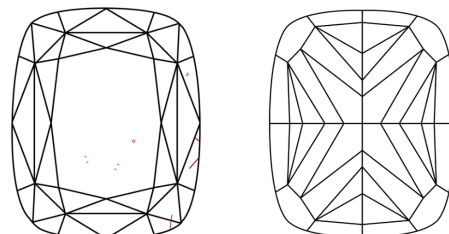
Comments: This Laboratory Grown Diamond was created by Chemical Vapor Deposition (CVD) growth process.

**PROPORTIONS**



Sample Image Used

**CLARITY CHARACTERISTICS**



**KEY TO SYMBOLS**

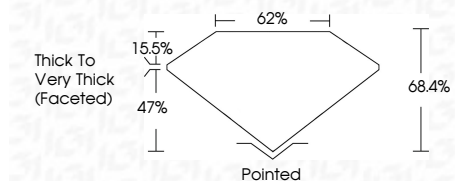
Red symbols indicate internal characteristics.  
Green symbols indicate external characteristics.

**COLOR**

D E F G H I J Faint Very Light Light

**CLARITY**

FL	IF	VS <sup>1-2</sup>	VS <sup>1-2</sup>	SI <sup>1-2</sup>	I <sup>1-3</sup>
Flawless	Internally Flawless	Very Very Slightly Included	Very Slightly Included	Slightly Included	Included



**ADDITIONAL GRADING INFORMATION**

Polish **EXCELLENT**  
Symmetry **EXCELLENT**  
Fluorescence **NONE**  
Inscription(s) **IGI LG814631020**  
Comments: This Laboratory Grown Diamond was created by Chemical Vapor Deposition (CVD) growth process.



July 4, 2026  
IGI Report No LG814631020  
**CUSHION MODIFIED BRILLIANT**  
11.15 X 8.44 X 5.77 MM  
5.02 CARATS  
FANCY VIVID YELLOW  
VS 2  
68.4%  
62%  
Thick to Very Thick (Faceted)  
Pointed  
EXCELLENT  
EXCELLENT  
NONE  
IGI LG814631020  
Comments: This Laboratory Grown Diamond was created by Chemical Vapor Deposition (CVD) growth process.