



ELECTRONIC COPY

LG814619875
Report verification at igi.org



June 29, 2026

IGI Report Number **LG814619875**

Description **LABORATORY GROWN DIAMOND**

Shape and Cutting Style **ROUND BRILLIANT**

Measurements **9.19 - 9.22 X 5.75 MM**

GRADING RESULTS

Carat Weight **3.02 CARATS**

Color Grade **E**

Clarity Grade **VVS 2**

Cut Grade **IDEAL**

June 29, 2026

IGI Report Number **LG814619875**

Description **LABORATORY GROWN DIAMOND**

Shape and Cutting Style **ROUND BRILLIANT**

Measurements **9.19 - 9.22 X 5.75 MM**

GRADING RESULTS

Carat Weight **3.02 CARATS**

Color Grade **E**

Clarity Grade **VVS 2**

Cut Grade **IDEAL**

ADDITIONAL GRADING INFORMATION

Polish **EXCELLENT**

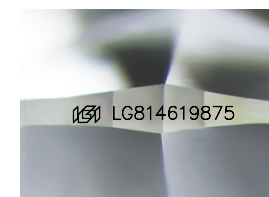
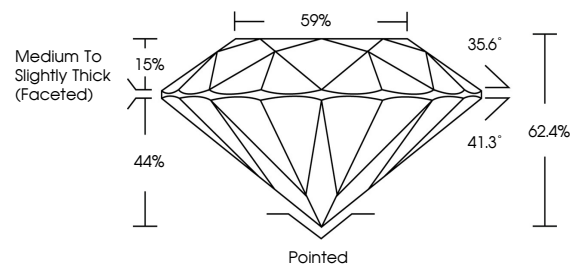
Symmetry **EXCELLENT**

Fluorescence **NONE**

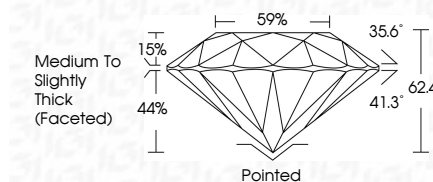
Inscription(s) **LG814619875**

Comments: This Laboratory Grown Diamond was created by Chemical Vapor Deposition (CVD) growth process. Type IIa

PROPORTIONS



Sample Image Used



COLOR

D E F G H I J Faint Very Light Light

CLARITY

FL	IF	VS ¹⁻²	VS ¹⁻²	SI ¹⁻²	I ¹⁻³
Flawless	Internally Flawless	Very Very Slightly Included	Very Slightly Included	Slightly Included	Included

ADDITIONAL GRADING INFORMATION

Polish **EXCELLENT**

Symmetry **EXCELLENT**

Fluorescence **NONE**

Inscription(s) **LG814619875**

Comments: This Laboratory Grown Diamond was created by Chemical Vapor Deposition (CVD) growth process. Type IIa



IGI



June 29, 2026	IGI Report No LG814619875	3.02 CARATS	E	Pointed	EXCELLENT	EXCELLENT	NONE	IGI LG814619875
IGI Report No LG814619875	ROUND BRILLIANT	9.19 - 9.22 X 5.75 MM	VVS 2	IDEAL	62.4%	59%	Medium To Slightly Thick (Faceted)	Pointed
Carat Weight	Color Grade	Clarity Grade	Depth	Table	Grade	Culet	Polish	Symmetry
3.02 CARATS	E	VVS 2	62.4%	59%	Medium To Slightly Thick (Faceted)	Pointed	EXCELLENT	EXCELLENT
Color Grade	Clarity Grade	Cut Grade	Table	Grade	Culet	Polish	Symmetry	Fluorescence
E	VVS 2	IDEAL	62.4%	59%	Medium To Slightly Thick (Faceted)	Pointed	EXCELLENT	EXCELLENT
Clarity Grade	Depth	Cut Grade	Table	Grade	Culet	Polish	Symmetry	Fluorescence
VVS 2	62.4%	IDEAL	62.4%	59%	Medium To Slightly Thick (Faceted)	Pointed	EXCELLENT	EXCELLENT
Depth	Table	Cut Grade	Table	Grade	Culet	Polish	Symmetry	Fluorescence
62.4%	59%	IDEAL	62.4%	59%	Medium To Slightly Thick (Faceted)	Pointed	EXCELLENT	EXCELLENT
Table	Grade	Culet	Polish	Symmetry	Fluorescence	Inscriptions(s)		
59%	Medium To Slightly Thick (Faceted)	Pointed	EXCELLENT	EXCELLENT	NONE	IGI LG814619875		
Inscriptions(s)								
IGI LG814619875								
Comments: This Laboratory Grown Diamond was created by Chemical Vapor Deposition (CVD) growth process. Type IIa								