



LABORATORY GROWN DIAMOND REPORT

July 1, 2026
 IGI Report Number **LG814619266**
 Description **LABORATORY GROWN DIAMOND**
 Shape and Cutting Style **SHIELD STEP CUT**
 Measurements **9.23 X 4.76 X 2.76 MM**

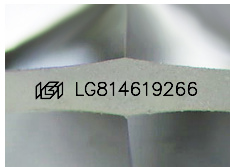
GRADING RESULTS

Carat Weight **0.75 CARAT**
 Color Grade **E**
 Clarity Grade **VS 1**

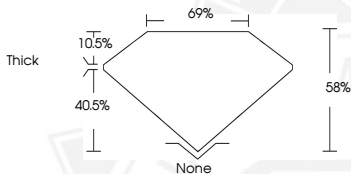
ADDITIONAL GRADING INFORMATION

Polish **VERY GOOD**
 Symmetry **VERY GOOD**
 Fluorescence **NONE**
 Inscription(s) **IGI LG814619266**

Comments: This Laboratory Grown Diamond was created by
 Chemical Vapor Deposition (CVD) growth process.
 Type IIa



Sample Image Used



July 1, 2026
 IGI Report Number **LG814619266**
 SHIELD STEP CUT
 LABORATORY GROWN DIAMOND
 9.23 X 4.76 X 2.76 MM
 Carat Weight **0.75 CARAT**
 Color Grade **E**
 Clarity Grade **VS 1**
 Polish **VERY GOOD**
 Symmetry **VERY GOOD**
 Fluorescence **NONE**
 Inscription(s) **IGI LG814619266**

Comments: This Laboratory Grown
 Diamond was created by
 Chemical Vapor Deposition (CVD)
 growth process. Type IIa



July 1, 2026
 IGI Report Number **LG814619266**
 SHIELD STEP CUT
 LABORATORY GROWN DIAMOND
 9.23 X 4.76 X 2.76 MM
 Carat Weight **0.75 CARAT**
 Color Grade **E**
 Clarity Grade **VS 1**
 Polish **VERY GOOD**
 Symmetry **VERY GOOD**
 Fluorescence **NONE**
 Inscription(s) **IGI LG814619266**

Comments: This Laboratory Grown
 Diamond was created by
 Chemical Vapor Deposition (CVD)
 growth process. Type IIa



THIS DOCUMENT WAS PRODUCED WITH THE FOLLOWING SECURITY MEASURES: SPECIAL DOCUMENT PAPER, INK SCREENS, WATERMARK, BACKGROUND DESIGNS, HOLOGRAM AND OTHER SECURITY FEATURES NOT LISTED AND DO EXCEED DOCUMENT SECURITY INDUSTRY GUIDELINES.