



**INTERNATIONAL
GEMOLOGICAL
INSTITUTE**

ELECTRONIC COPY



July 1, 2026

IGI Report Number LG814619190
ROUND BRILLIANT
LABORATORY GROWN DIAMOND
6.06 - 6.10 X 3.62 MM

0.81 CARAT
FANCY LIGHT
YELLOW
VVS 2
EXCELLENT
VERY GOOD
VERY GOOD
NONE
IGI LG814619190

Comments: This Laboratory Grown Diamond was created by Chemical Vapor Deposition (CVD) growth process. Indications of post-growth treatment.
Secondary color: Brown

LABORATORY GROWN DIAMOND REPORT

July 1, 2026
IGI Report Number **LG814619190**
Description **LABORATORY GROWN DIAMOND**
Shape and Cutting Style **ROUND BRILLIANT**
Measurements **6.06 - 6.10 X 3.62 MM**

GRADING RESULTS

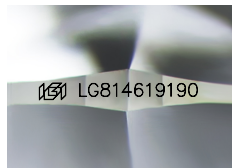
Carat Weight **0.81 CARAT**
Color Grade **FANCY LIGHT YELLOW**
Clarity Grade **VVS 2**
Cut Grade **EXCELLENT**

ADDITIONAL GRADING INFORMATION

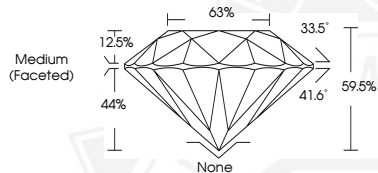
Polish **VERY GOOD**
Symmetry **VERY GOOD**
Fluorescence **NONE**
Inscription(s) **IGI LG814619190**

Comments: This Laboratory Grown Diamond was created by Chemical Vapor Deposition (CVD) growth process.
Indications of post-growth treatment.

Secondary color: Brown



Sample Image Used



July 1, 2026

IGI Report Number LG814619190
ROUND BRILLIANT
LABORATORY GROWN DIAMOND
6.06 - 6.10 X 3.62 MM

0.81 CARAT
FANCY LIGHT
YELLOW
VVS 2
EXCELLENT
VERY GOOD
VERY GOOD
NONE
IGI LG814619190

Comments: This Laboratory Grown Diamond was created by Chemical Vapor Deposition (CVD) growth process. Indications of post-growth treatment.
Secondary color: Brown



THIS DOCUMENT WAS PRODUCED WITH THE FOLLOWING SECURITY MEASURES: SPECIAL DOCUMENT PAPER, INK SCREENS, WATERMARK, BACKGROUND DESIGNS, HOLOGRAM AND OTHER SECURITY FEATURES NOT LISTED AND DO EXCEED DOCUMENT SECURITY INDUSTRY GUIDELINES.

For terms & conditions and to verify this report, please visit www.igi.org