



ELECTRONIC COPY

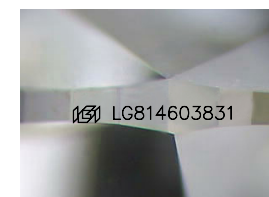
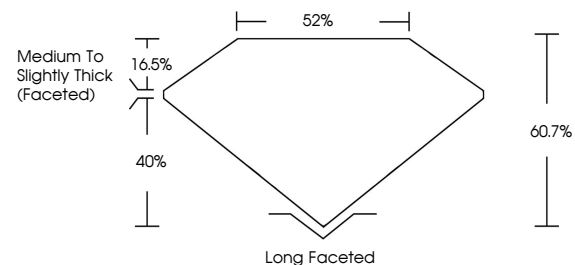
LG814603831
Report verification at igi.org



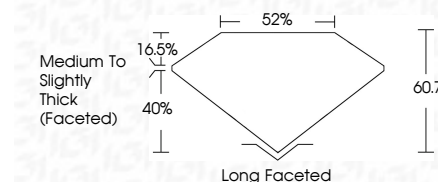
June 29, 2026
IGI Report Number **LG814603831**
Description **LABORATORY GROWN DIAMOND**
Shape and Cutting Style **ANTIQUÉ OVAL CUT**
Measurements **14.59 X 7.96 X 4.83 MM**
GRADING RESULTS
Carat Weight **3.56 CARATS**
Color Grade **D**
Clarity Grade **VVS 1**

June 29, 2026
IGI Report Number **LG814603831**
Description **LABORATORY GROWN DIAMOND**
Shape and Cutting Style **ANTIQUÉ OVAL CUT**
Measurements **14.59 X 7.96 X 4.83 MM**
GRADING RESULTS
Carat Weight **3.56 CARATS**
Color Grade **D**
Clarity Grade **VVS 1**

PROPORTIONS



Sample Image Used



ADDITIONAL GRADING INFORMATION

Polish **EXCELLENT**
Symmetry **EXCELLENT**
Fluorescence **NONE**
Inscription(s) **IGI LG814603831**

Comments: This Laboratory Grown Diamond was created by Chemical Vapor Deposition (CVD) growth process.
Type IIa

ADDITIONAL GRADING INFORMATION

Polish **EXCELLENT**
Symmetry **EXCELLENT**
Fluorescence **NONE**
Inscription(s) **IGI LG814603831**
Comments: This Laboratory Grown Diamond was created by Chemical Vapor Deposition (CVD) growth process.
Type IIa

COLOR

D E F G H I J Faint Very Light Light

CLARITY

FL	IF	VS ¹⁻²	VS ¹⁻²	SI ¹⁻²	I ¹⁻³
Flawless	Internally Flawless	Very Very Slightly Included	Very Slightly Included	Slightly Included	Included



IGI



June 29, 2026
IGI Report No LG814603831
ANTIQUÉ OVAL CUT
14.59 X 7.96 X 4.83 MM
3.56 CARATS
D
VVS 1
60.7%
52%
Medium to Slightly Thick (Faceted)
Long Faceted
EXCELLENT
EXCELLENT
NONE
IGI LG814603831

Comments: This Laboratory Grown Diamond was created by Chemical Vapor Deposition (CVD) growth process.
Type IIa