



ELECTRONIC COPY

LG813699557 Report verification at igi.org



June 29, 2026 IGI Report Number LG813699557 Description LABORATORY GROWN DIAMOND Shape and Cutting Style HEXAGONAL MODIFIED BRILLIANT Measurements 12.11 X 6.14 X 4.18 MM GRADING RESULTS Carat Weight 2.01 CARATS Color Grade E Clarity Grade VVS 2

LABORATORY GROWN DIAMOND REPORT

June 29, 2026 IGI Report Number LG813699557 Description LABORATORY GROWN DIAMOND Shape and Cutting Style HEXAGONAL MODIFIED BRILLIANT Measurements 12.11 X 6.14 X 4.18 MM

GRADING RESULTS

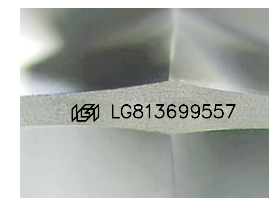
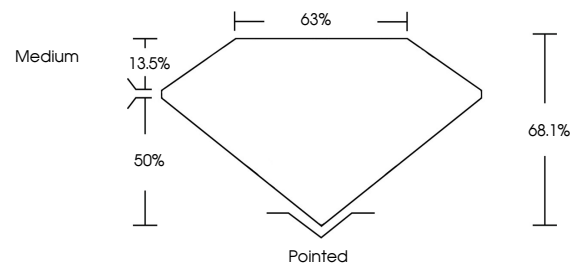
Carat Weight 2.01 CARATS Color Grade E Clarity Grade VVS 2

ADDITIONAL GRADING INFORMATION

Polish EXCELLENT Symmetry EXCELLENT Fluorescence NONE Inscription(s) LG813699557

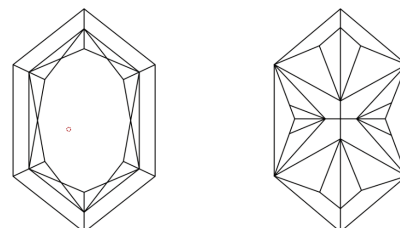
Comments: This Laboratory Grown Diamond was created by Chemical Vapor Deposition (CVD) growth process. Type IIa

PROPORTIONS



Sample Image Used

CLARITY CHARACTERISTICS



KEY TO SYMBOLS

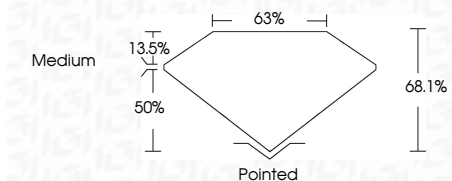
Red symbols indicate internal characteristics. Green symbols indicate external characteristics.

COLOR

D E F G H I J Faint Very Light Light

CLARITY

FL IF VVS 1-2 VS 1-2 SI 1-2 I 1-3 Flawless Internally Flawless Very Very Slightly Included Very Slightly Included Slightly Included Included



ADDITIONAL GRADING INFORMATION

Polish EXCELLENT Symmetry EXCELLENT Fluorescence NONE Inscription(s) LG813699557 Comments: This Laboratory Grown Diamond was created by Chemical Vapor Deposition (CVD) growth process. Type IIa



IGI



June 29, 2026 IGI Report No LG813699557 HEXAGONAL MODIFIED BRILLIANT 2.01 CARATS E VVS 2 68.1% 63% Medium Pointed EXCELLENT EXCELLENT NONE LG813699557 Comments: This Laboratory Grown Diamond was created by Chemical Vapor Deposition (CVD) growth process. Type IIa