



ELECTRONIC COPY

LG813675932
Report verification at igi.org



June 30, 2026

IGI Report Number **LG813675932**

Description **LABORATORY GROWN DIAMOND**

Shape and Cutting Style **ROUND BRILLIANT**

Measurements **6.50 - 6.53 X 3.99 MM**

GRADING RESULTS

Carat Weight **1.04 CARAT**

Color Grade **E**

Clarity Grade **VVS 2**

Cut Grade **IDEAL**

June 30, 2026

IGI Report Number **LG813675932**

Description **LABORATORY GROWN DIAMOND**

Shape and Cutting Style **ROUND BRILLIANT**

Measurements **6.50 - 6.53 X 3.99 MM**

GRADING RESULTS

Carat Weight **1.04 CARAT**

Color Grade **E**

Clarity Grade **VVS 2**

Cut Grade **IDEAL**

ADDITIONAL GRADING INFORMATION

Polish **EXCELLENT**

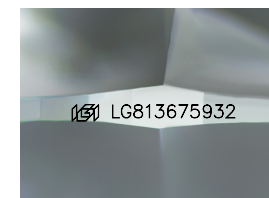
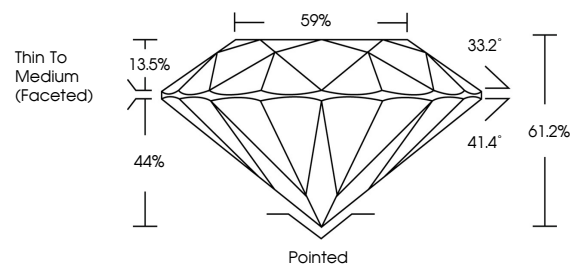
Symmetry **EXCELLENT**

Fluorescence **NONE**

Inscription(s) **IGI LG813675932**

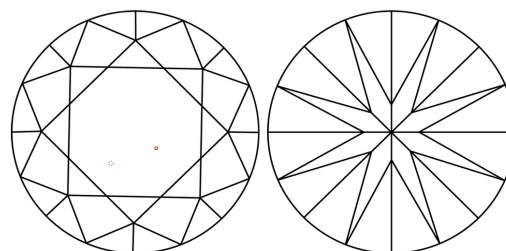
Comments: This Laboratory Grown Diamond was created by Chemical Vapor Deposition (CVD) growth process.
Type IIa

PROPORTIONS



Sample Image Used

CLARITY CHARACTERISTICS



KEY TO SYMBOLS

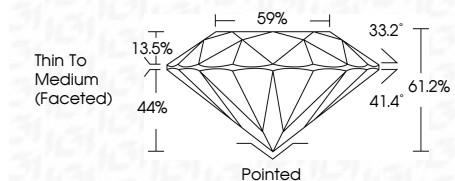
Red symbols indicate internal characteristics.
Green symbols indicate external characteristics.

COLOR

D E F G H I J Faint Very Light Light

CLARITY

FL	IF	VVS ¹⁻²	VS ¹⁻²	SI ¹⁻²	I ¹⁻³
Flawless	Internally Flawless	Very Very Slightly Included	Very Slightly Included	Slightly Included	Included



ADDITIONAL GRADING INFORMATION

Polish **EXCELLENT**

Symmetry **EXCELLENT**

Fluorescence **NONE**

Inscription(s) **IGI LG813675932**

Comments: This Laboratory Grown Diamond was created by Chemical Vapor Deposition (CVD) growth process.
Type IIa



IGI



June 30, 2026	IGI Report No LG813675932	1.04 CARAT	E	Pointed	EXCELLENT	EXCELLENT	NONE	IGI LG813675932
ROUND BRILLIANT	6.50 - 6.53 X 3.99 MM	Color Grade	VVS 2	Cut Grade	IDEAL	61.2%	Thin To Medium (Faceted)	None
		Clarity Grade	VVS 2	Polish	EXCELLENT	Symmetry	EXCELLENT	None
		Depth	44%	Fluorescence	NONE	Inscription(s)	IGI LG813675932	
		Table	59%	Comments: This Laboratory Grown Diamond was created by Chemical Vapor Deposition (CVD) growth process.				Type IIa