



ELECTRONIC COPY

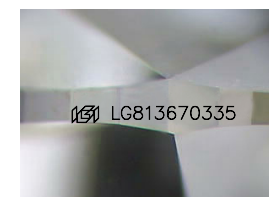
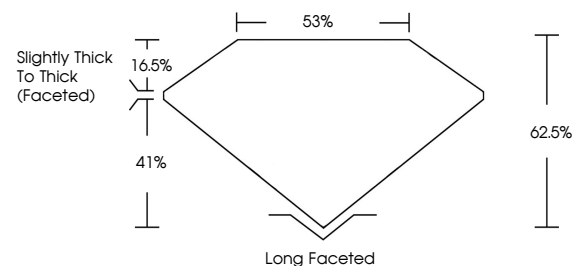
LG813670335
Report verification at igi.org



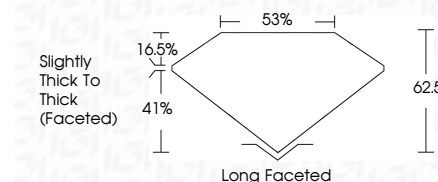
June 29, 2026
IGI Report Number **LG813670335**
Description **LABORATORY GROWN DIAMOND**
Shape and Cutting Style **ANTIQUÉ OVAL CUT**
Measurements **14.46 X 8.05 X 5.03 MM**
GRADING RESULTS
Carat Weight **4.00 CARATS**
Color Grade **D**
Clarity Grade **VVS 1**

June 29, 2026
IGI Report Number **LG813670335**
Description **LABORATORY GROWN DIAMOND**
Shape and Cutting Style **ANTIQUÉ OVAL CUT**
Measurements **14.46 X 8.05 X 5.03 MM**
GRADING RESULTS
Carat Weight **4.00 CARATS**
Color Grade **D**
Clarity Grade **VVS 1**

PROPORTIONS



Sample Image Used



ADDITIONAL GRADING INFORMATION

Polish **EXCELLENT**
Symmetry **EXCELLENT**
Fluorescence **NONE**
Inscription(s) **IGI LG813670335**

Comments: This Laboratory Grown Diamond was created by Chemical Vapor Deposition (CVD) growth process.
Type IIa

ADDITIONAL GRADING INFORMATION

Polish **EXCELLENT**
Symmetry **EXCELLENT**
Fluorescence **NONE**
Inscription(s) **IGI LG813670335**
Comments: This Laboratory Grown Diamond was created by Chemical Vapor Deposition (CVD) growth process.
Type IIa

COLOR

D E F G H I J Faint Very Light Light

CLARITY

FL	IF	VVS ¹⁻²	VS ¹⁻²	SI ¹⁻²	I ¹⁻³
Flawless	Internally Flawless	Very Very Slightly Included	Very Slightly Included	Slightly Included	Included



IGI



June 29, 2026
IGI Report No LG813670335
ANTIQUÉ OVAL CUT
14.46 X 8.05 X 5.03 MM
4.00 CARATS
D
4.00 CARATS
VVS 1
62.5%
85%
Slightly Thick To Thick (Faceted)
Long Faceted
EXCELLENT
EXCELLENT
NONE
IGI LG813670335
Comments: This Laboratory Grown Diamond was created by Chemical Vapor Deposition (CVD) growth process.
Type IIa