



**ELECTRONIC COPY**

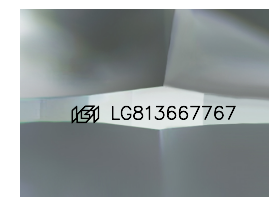
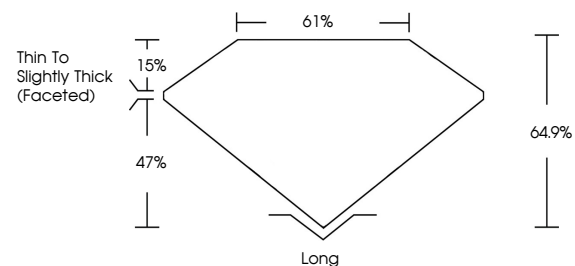
LG813667767  
Report verification at igi.org



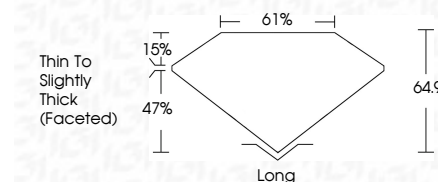
June 27, 2026  
IGI Report Number **LG813667767**  
Description **LABORATORY GROWN DIAMOND**  
Shape and Cutting Style **MODIFIED RECTANGULAR  
CUSHION MIXED CUT**  
Measurements **7.68 X 5.01 X 3.25 MM**  
**GRADING RESULTS**  
Carat Weight **1.10 CARAT**  
Color Grade **D**  
Clarity Grade **VVS 2**

June 27, 2026  
IGI Report Number **LG813667767**  
Description **LABORATORY GROWN DIAMOND**  
Shape and Cutting Style **MODIFIED RECTANGULAR  
CUSHION MIXED CUT**  
Measurements **7.68 X 5.01 X 3.25 MM**  
**GRADING RESULTS**  
Carat Weight **1.10 CARAT**  
Color Grade **D**  
Clarity Grade **VVS 2**

**PROPORTIONS**



Sample Image Used



**ADDITIONAL GRADING INFORMATION**

Polish **EXCELLENT**  
Symmetry **EXCELLENT**  
Fluorescence **NONE**  
Inscription(s) **IGI LG813667767**

Comments: This Laboratory Grown Diamond was created by Chemical Vapor Deposition (CVD) growth process. Type IIa

**ADDITIONAL GRADING INFORMATION**

Polish **EXCELLENT**  
Symmetry **EXCELLENT**  
Fluorescence **NONE**  
Inscription(s) **IGI LG813667767**  
Comments: This Laboratory Grown Diamond was created by Chemical Vapor Deposition (CVD) growth process. Type IIa

**COLOR**

D E F G H I J Faint Very Light Light

**CLARITY**

FL	IF	VS <sup>1-2</sup>	VS <sup>1-2</sup>	SI <sup>1-2</sup>	I <sup>1-3</sup>
Flawless	Internally Flawless	Very Very Slightly Included	Very Slightly Included	Slightly Included	Included



**IGI**



June 27, 2026  
IGI Report No **LG813667767**  
**MODIFIED RECTANGULAR CUSHION MIXED CUT**  
**7.68 X 5.01 X 3.25 MM**  
Carat Weight **1.10 CARAT**  
Color Grade **D**  
Clarity Grade **VVS 2**  
Depth **64.9%**  
Table **61%**  
Girdle **Thin To Slightly Thick (Faceted)**  
Culet **Long**  
Polish **EXCELLENT**  
Symmetry **EXCELLENT**  
Fluorescence **NONE**  
Inscription(s) **IGI LG813667767**

Comments: This Laboratory Grown Diamond was created by Chemical Vapor Deposition (CVD) growth process. Type IIa