



ELECTRONIC COPY

LG813665181
Report verification at igi.org

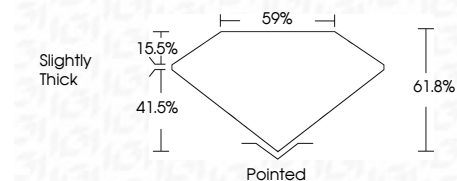


July 1, 2026
IGI Report Number LG813665181
Description LABORATORY GROWN DIAMOND
Shape and Cutting Style CUT CORNERED RECTANGULAR MODIFIED BRILLIANT

Measurements 13.13 X 8.37 X 5.17 MM

GRADING RESULTS

Carat Weight 5.06 CARATS
Color Grade F
Clarity Grade VS 1

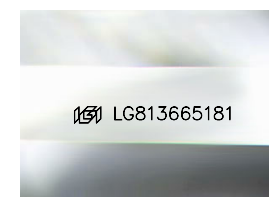


ADDITIONAL GRADING INFORMATION

Polish EXCELLENT
Symmetry EXCELLENT
Fluorescence NONE
Inscription(s) IGI LG813665181
Comments: This Laboratory Grown Diamond was created by Chemical Vapor Deposition (CVD) growth process. Type IIa

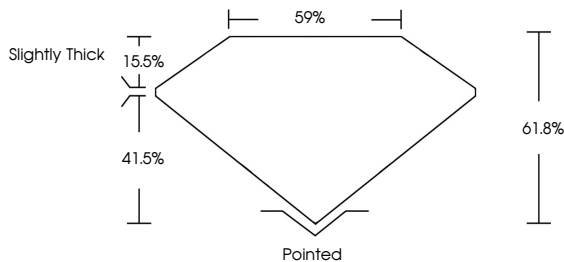


July 1, 2026
IGI Report No LG813665181
CUT CORNERED RECT. MODIFIED BRILLIANT
13.13 X 8.37 X 5.17 MM
5.06 CARATS
F
VS 1
61.8%
59%
Slightly Thick
Pointed
EXCELLENT
EXCELLENT
NONE
IGI LG813665181
Comments: This Laboratory Grown Diamond was created by Chemical Vapor Deposition (CVD) growth process. Type IIa

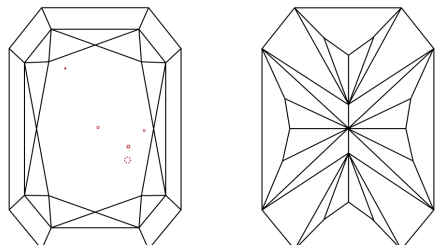


Sample Image Used

PROPORTIONS



CLARITY CHARACTERISTICS



KEY TO SYMBOLS

Red symbols indicate internal characteristics.
Green symbols indicate external characteristics.

COLOR

Table with color grades: D, E, F, G, H, I, J, Faint, Very Light, Light

CLARITY

Table with clarity grades: FL, IF, VS 1-2, VS 1-2, SI 1-2, I 1-3, Flawless, Internally Flawless, Very Very Slightly Included, Very Slightly Included, Slightly Included, Included

