



ELECTRONIC COPY

LG813664903
Report verification at igi.org



June 30, 2026
IGI Report Number **LG813664903**
Description **LABORATORY GROWN DIAMOND**
Shape and Cutting Style **ROUND BRILLIANT**
Measurements **6.34 - 6.36 X 3.97 MM**
GRADING RESULTS
Carat Weight **1.00 CARAT**
Color Grade **FANCY INTENSE PINK**
Clarity Grade **VS 2**
Cut Grade **IDEAL**

June 30, 2026
IGI Report Number **LG813664903**
Description **LABORATORY GROWN DIAMOND**
Shape and Cutting Style **ROUND BRILLIANT**
Measurements **6.34 - 6.36 X 3.97 MM**

GRADING RESULTS

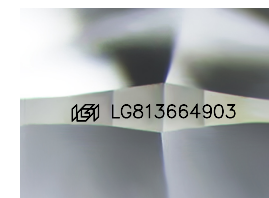
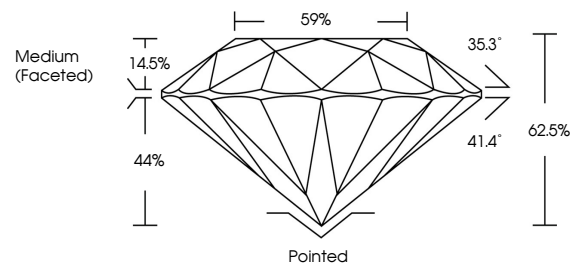
Carat Weight **1.00 CARAT**
Color Grade **FANCY INTENSE PINK**
Clarity Grade **VS 2**
Cut Grade **IDEAL**

ADDITIONAL GRADING INFORMATION

Polish **EXCELLENT**
Symmetry **VERY GOOD**
Fluorescence **SLIGHT**
Inscription(s) **IGI LG813664903**

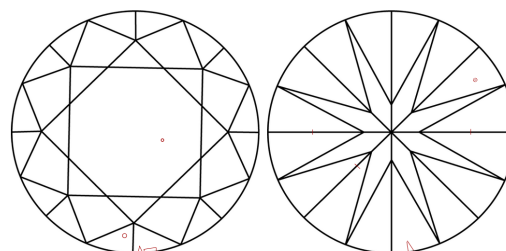
Comments: This Laboratory Grown Diamond was created by Chemical Vapor Deposition (CVD) growth process.
Indications of post-growth treatment.

PROPORTIONS



Sample Image Used

CLARITY CHARACTERISTICS



KEY TO SYMBOLS

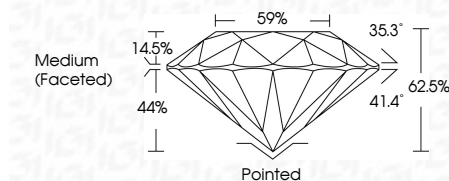
Red symbols indicate internal characteristics.
Green symbols indicate external characteristics.

COLOR

D E F G H I J Faint Very Light Light

CLARITY

FL	IF	VS ¹⁻²	VS ¹⁻²	SI ¹⁻²	I ¹⁻³
Flawless	Internally Flawless	Very Very Slightly Included	Very Slightly Included	Slightly Included	Included



ADDITIONAL GRADING INFORMATION

Polish **EXCELLENT**
Symmetry **VERY GOOD**
Fluorescence **SLIGHT**
Inscription(s) **IGI LG813664903**
Comments: This Laboratory Grown Diamond was created by Chemical Vapor Deposition (CVD) growth process.
Indications of post-growth treatment.



June 30, 2026
IGI Report No LG813664903
ROUND BRILLIANT
6.34 - 6.36 X 3.97 MM
1.00 CARAT
FANCY INTENSE PINK
VS 2
IDEAL
62.5%
59%
Medium (Faceted)
Pointed
EXCELLENT
VERY GOOD
SLIGHT
IGI LG813664903
Comments: This Laboratory Grown Diamond was created by Chemical Vapor Deposition (CVD) growth process.
Indications of post-growth treatment.