



**ELECTRONIC COPY**

LG813659586  
Report verification at igi.org



July 2, 2026  
IGI Report Number **LG813659586**  
Description **LABORATORY GROWN DIAMOND**  
Shape and Cutting Style **EMERALD CUT**  
Measurements **8.73 X 4.54 X 2.56 MM**  
**GRADING RESULTS**  
Carat Weight **1.01 CARAT**  
Color Grade **FANCY INTENSE BLUE**  
Clarity Grade **VVS 2**

July 2, 2026  
IGI Report Number **LG813659586**  
Description **LABORATORY GROWN DIAMOND**  
Shape and Cutting Style **EMERALD CUT**  
Measurements **8.73 X 4.54 X 2.56 MM**

**GRADING RESULTS**

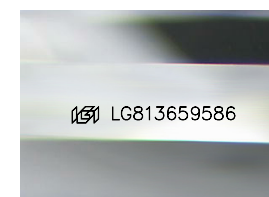
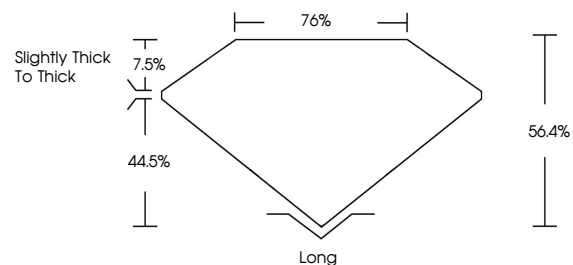
Carat Weight **1.01 CARAT**  
Color Grade **FANCY INTENSE BLUE**  
Clarity Grade **VVS 2**

**ADDITIONAL GRADING INFORMATION**

Polish **VERY GOOD**  
Symmetry **VERY GOOD**  
Fluorescence **NONE**  
Inscription(s) **LG813659586**

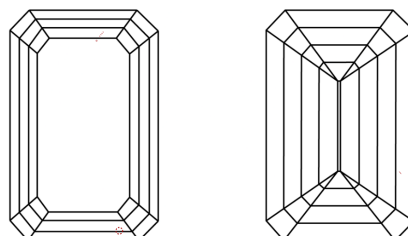
Comments: This Laboratory Grown Diamond was created by Chemical Vapor Deposition (CVD) growth process.  
Indications of post-growth treatment.

**PROPORTIONS**



Sample Image Used

**CLARITY CHARACTERISTICS**



**KEY TO SYMBOLS**

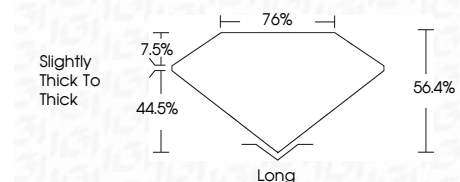
Red symbols indicate internal characteristics.  
Green symbols indicate external characteristics.

**COLOR**

D E F G H I J Faint Very Light Light

**CLARITY**

FL	IF	VVS <sup>1-2</sup>	VS <sup>1-2</sup>	SI <sup>1-2</sup>	I <sup>1-3</sup>
Flawless	Internally Flawless	Very Very Slightly Included	Very Slightly Included	Slightly Included	Included



**ADDITIONAL GRADING INFORMATION**

Polish **VERY GOOD**  
Symmetry **VERY GOOD**  
Fluorescence **NONE**  
Inscription(s) **LG813659586**  
Comments: This Laboratory Grown Diamond was created by Chemical Vapor Deposition (CVD) growth process.  
Indications of post-growth treatment.



July 2, 2026  
IGI Report No. LG813659586  
**EMERALD CUT**  
1.01 CARAT  
8.73 X 4.54 X 2.56 MM  
Carat Weight  
Color Grade **FANCY INTENSE BLUE**  
Clarity Grade **VVS 2**  
Depth **56.4%**  
Table **76%**  
Girdle **Slightly thick to thick**  
Culet **Long**  
Polish **VERY GOOD**  
Symmetry **VERY GOOD**  
Fluorescence **NONE**  
Inscription(s) **LG813659586**  
Comments: This Laboratory Grown Diamond was created by Chemical Vapor Deposition (CVD) growth process.  
Indications of post-growth treatment.