



ELECTRONIC COPY

LG813658518
Report verification at igi.org



July 6, 2026
IGI Report Number **LG813658518**
Description **LABORATORY GROWN DIAMOND**
Shape and Cutting Style **SQUARE CUSHION MODIFIED BRILLIANT**
Measurements **10.35 X 9.93 X 6.01 MM**
GRADING RESULTS
Carat Weight **5.56 CARATS**
Color Grade **FANCY VIVID ORANGE PINK**
Clarity Grade **VS 1**

LABORATORY GROWN DIAMOND REPORT

July 6, 2026
IGI Report Number **LG813658518**
Description **LABORATORY GROWN DIAMOND**
Shape and Cutting Style **SQUARE CUSHION MODIFIED BRILLIANT**
Measurements **10.35 X 9.93 X 6.01 MM**

GRADING RESULTS

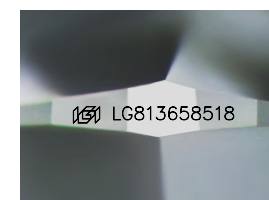
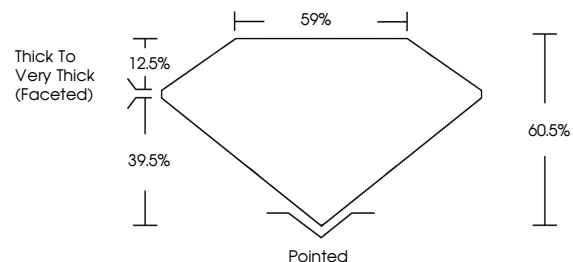
Carat Weight **5.56 CARATS**
Color Grade **FANCY VIVID ORANGE PINK**
Clarity Grade **VS 1**

ADDITIONAL GRADING INFORMATION

Polish **VERY GOOD**
Symmetry **EXCELLENT**
Fluorescence **STRONG**
Inscription(s) **LG813658518**

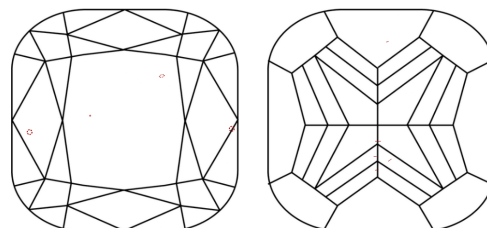
Comments: This Laboratory Grown Diamond was created by Chemical Vapor Deposition (CVD) growth process.
Indications of post-growth treatment.

PROPORTIONS



Sample Image Used

CLARITY CHARACTERISTICS



KEY TO SYMBOLS

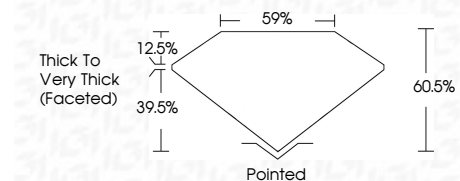
Red symbols indicate internal characteristics.
Green symbols indicate external characteristics.

COLOR

D E F G H I J Faint Very Light Light

CLARITY

FL IF VS¹⁻² VS¹⁻² SI¹⁻² I¹⁻³
Flawless Internally Flawless Very Very Slightly Included Very Slightly Included Slightly Included Included



ADDITIONAL GRADING INFORMATION

Polish **VERY GOOD**
Symmetry **EXCELLENT**
Fluorescence **STRONG**
Inscription(s) **LG813658518**
Comments: This Laboratory Grown Diamond was created by Chemical Vapor Deposition (CVD) growth process.
Indications of post-growth treatment.



July 6, 2026
IGI Report No **LG813658518**
SQUARE CUSHION MODIFIED BRILLIANT
Carat Weight **5.56 CARATS**
Color Grade **FANCY VIVID ORANGE PINK**
Clarity Grade **VS 1**
Depth **60.5%**
Table **59%**
Girdle **Thick to Very Thick (Faceted)**
Culet **Pointed**
Polish **VERY GOOD**
Symmetry **EXCELLENT**
Fluorescence **STRONG**
Inscription(s) **LG813658518**
Comments: This Laboratory Grown Diamond was created by Chemical Vapor Deposition (CVD) growth process.
Indications of post-growth treatment.