



ELECTRONIC COPY

LG813658516
Report verification at igi.org



July 6, 2026
IGI Report Number **LG813658516**
Description **LABORATORY GROWN DIAMOND**
Shape and Cutting Style **CUSHION MODIFIED BRILLIANT**
Measurements **12.57 X 9.93 X 6.59 MM**
GRADING RESULTS
Carat Weight **7.55 CARATS**
Color Grade **FANCY VIVID PINK**
Clarity Grade **VVS 2**

LABORATORY GROWN DIAMOND REPORT

July 6, 2026
IGI Report Number **LG813658516**
Description **LABORATORY GROWN DIAMOND**
Shape and Cutting Style **CUSHION MODIFIED BRILLIANT**
Measurements **12.57 X 9.93 X 6.59 MM**

GRADING RESULTS

Carat Weight **7.55 CARATS**
Color Grade **FANCY VIVID PINK**
Clarity Grade **VVS 2**

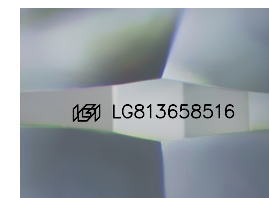
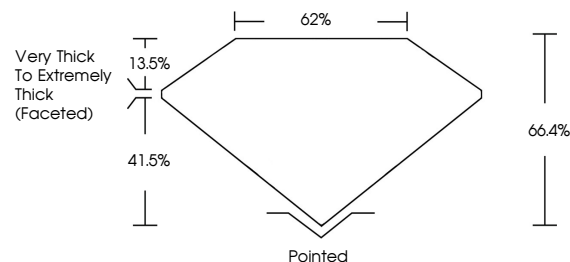
ADDITIONAL GRADING INFORMATION

Polish **VERY GOOD**
Symmetry **EXCELLENT**
Fluorescence **STRONG**
Inscription(s) **IGI LG813658516**

Comments: This Laboratory Grown Diamond was created by Chemical Vapor Deposition (CVD) growth process.
Indications of post-growth treatment.

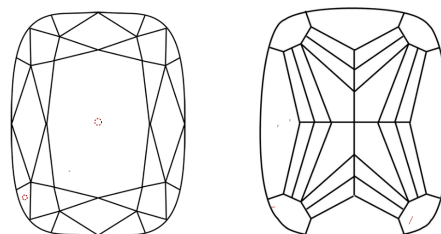
Secondary color: Orange

PROPORTIONS



Sample Image Used

CLARITY CHARACTERISTICS



KEY TO SYMBOLS

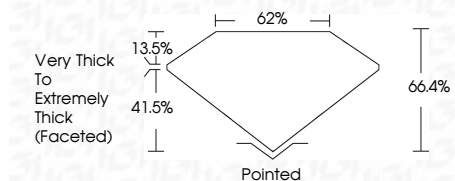
Red symbols indicate internal characteristics.
Green symbols indicate external characteristics.

COLOR

D E F G H I J Faint Very Light Light

CLARITY

FL	IF	VVS ¹⁻²	VS ¹⁻²	SI ¹⁻²	I ¹⁻³
Flawless	Internally Flawless	Very Very Slightly Included	Very Slightly Included	Slightly Included	Included



ADDITIONAL GRADING INFORMATION

Polish **VERY GOOD**
Symmetry **EXCELLENT**
Fluorescence **STRONG**
Inscription(s) **IGI LG813658516**
Comments: This Laboratory Grown Diamond was created by Chemical Vapor Deposition (CVD) growth process.
Indications of post-growth treatment.
Secondary color: Orange



July 6, 2026
IGI Report No **LG813658516**
CUSHION MODIFIED BRILLIANT
12.57 X 9.93 X 6.59 MM
7.55 CARATS
FANCY VIVID PINK
VVS 2
66.4%
62%
Very Thick to Extremely Thick (Faceted)
Pointed
VERY GOOD
EXCELLENT
STRONG
IGI LG813658516
Comments: This Laboratory Grown Diamond was created by Chemical Vapor Deposition (CVD) growth process.
Indications of post-growth treatment.
Secondary color: Orange