



ELECTRONIC COPY

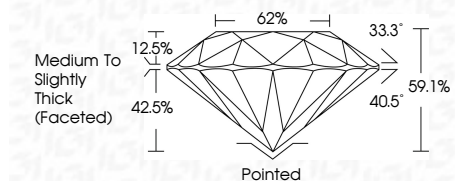
LG813647534 Report verification at igi.org



June 26, 2026 IGI Report Number LG813647534 Description LABORATORY GROWN DIAMOND Shape and Cutting Style ROUND BRILLIANT Measurements 9.82 - 9.86 X 5.82 MM

GRADING RESULTS

Carat Weight 3.50 CARATS Color Grade E Clarity Grade VS 1 Cut Grade EXCELLENT



ADDITIONAL GRADING INFORMATION

Polish EXCELLENT Symmetry EXCELLENT Fluorescence NONE Inscription(s) LG813647534 Comments: This Laboratory Grown Diamond was created by Chemical Vapor Deposition (CVD) growth process. Type IIa



June 26, 2026 IGI Report No LG813647534 ROUND BRILLIANT 3.50 CARATS E VS 1 EXCELLENT 9.82 - 9.86 X 5.82 MM 62% 42.5% 33.3° 40.5° 59.1% Medium To Slightly Thick (Faceted) Pointed EXCELLENT EXCELLENT NONE LG813647534

June 26, 2026 IGI Report Number LG813647534 Description LABORATORY GROWN DIAMOND Shape and Cutting Style ROUND BRILLIANT Measurements 9.82 - 9.86 X 5.82 MM

GRADING RESULTS

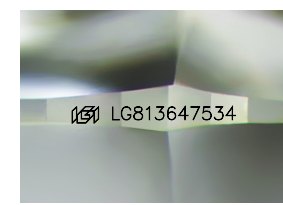
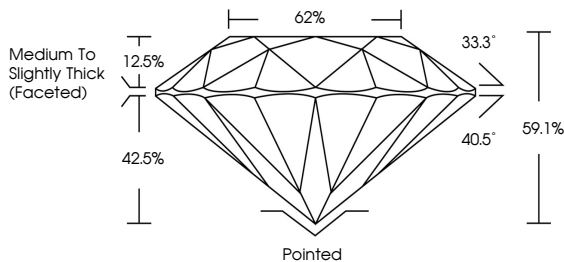
Carat Weight 3.50 CARATS Color Grade E Clarity Grade VS 1 Cut Grade EXCELLENT

ADDITIONAL GRADING INFORMATION

Polish EXCELLENT Symmetry EXCELLENT Fluorescence NONE Inscription(s) LG813647534

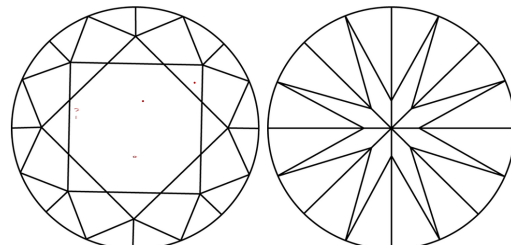
Comments: This Laboratory Grown Diamond was created by Chemical Vapor Deposition (CVD) growth process. Type IIa

PROPORTIONS



Sample Image Used

CLARITY CHARACTERISTICS



KEY TO SYMBOLS

Red symbols indicate internal characteristics. Green symbols indicate external characteristics.

COLOR

Table with color grades: D, E, F, G, H, I, J, Faint, Very Light, Light

CLARITY

Table with clarity grades: FL, IF, VS 1-2, VS 1-2, SI 1-2, I 1-3, Flawless, Internally Flawless, Very Very Slightly Included, Very Slightly Included, Slightly Included, Included

