



**ELECTRONIC COPY**

LG813640405  
Report verification at igi.org



June 29, 2026

IGI Report Number **LG813640405**

Description **LABORATORY GROWN DIAMOND**

Shape and Cutting Style **HEART MODIFIED BRILLIANT**

Measurements **7.00 X 7.51 X 4.09 MM**

**GRADING RESULTS**

Carat Weight **1.52 CARAT**

Color Grade **FANCY INTENSE YELLOW**

Clarity Grade **VS 2**

June 29, 2026  
IGI Report Number **LG813640405**  
Description **LABORATORY GROWN DIAMOND**  
Shape and Cutting Style **HEART MODIFIED BRILLIANT**  
Measurements **7.00 X 7.51 X 4.09 MM**

**GRADING RESULTS**

Carat Weight **1.52 CARAT**

Color Grade **FANCY INTENSE YELLOW**

Clarity Grade **VS 2**

**ADDITIONAL GRADING INFORMATION**

Polish **EXCELLENT**

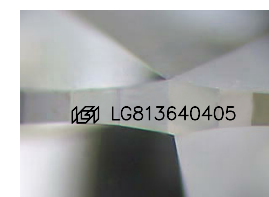
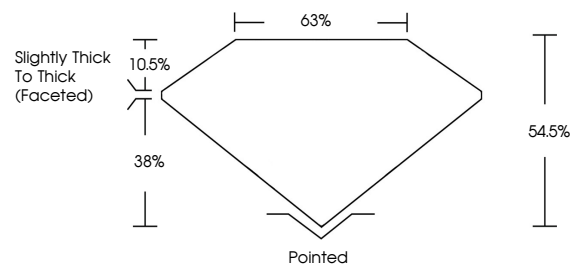
Symmetry **EXCELLENT**

Fluorescence **NONE**

Inscription(s) **IGI LG813640405**

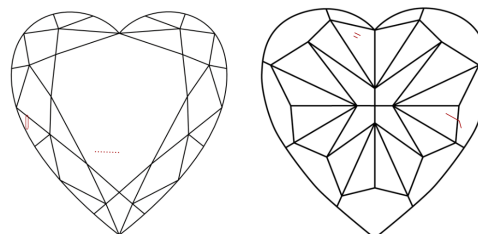
Comments: This Laboratory Grown Diamond was created by Chemical Vapor Deposition (CVD) growth process.

**PROPORTIONS**



Sample Image Used

**CLARITY CHARACTERISTICS**



**KEY TO SYMBOLS**

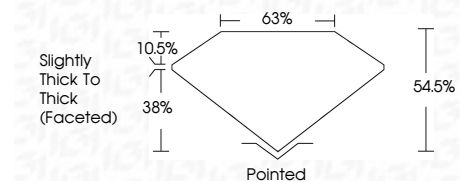
Red symbols indicate internal characteristics.  
Green symbols indicate external characteristics.

**COLOR**

D E F G H I J Faint Very Light Light

**CLARITY**

FL	IF	VS <sup>1-2</sup>	VS <sup>1-2</sup>	SI <sup>1-2</sup>	I <sup>1-3</sup>
Flawless	Internally Flawless	Very Very Slightly Included	Very Slightly Included	Slightly Included	Included



**ADDITIONAL GRADING INFORMATION**

Polish **EXCELLENT**

Symmetry **EXCELLENT**

Fluorescence **NONE**

Inscription(s) **IGI LG813640405**

Comments: This Laboratory Grown Diamond was created by Chemical Vapor Deposition (CVD) growth process.



June 29, 2026  
IGI Report No LG813640405  
**HEART MODIFIED BRILLIANT**  
7.00 X 7.51 X 4.09 MM  
1.52 CARAT  
FANCY INTENSE YELLOW  
VS 2  
54.5%  
38%  
Slightly Thick To Thick (Faceted)  
Pointed  
EXCELLENT  
EXCELLENT  
NONE  
IGI LG813640405

Comments: This Laboratory Grown Diamond was created by Chemical Vapor Deposition (CVD) growth process.