



ELECTRONIC COPY

LG813636038
Report verification at igi.org



June 27, 2026
IGI Report Number **LG813636038**
Description **LABORATORY GROWN DIAMOND**
Shape and Cutting Style **CUSHION BRILLIANT**
Measurements **10.74 X 7.57 X 4.76 MM**
GRADING RESULTS
Carat Weight **3.02 CARATS**
Color Grade **FANCY BROWN**
Clarity Grade **SI 2**

LABORATORY GROWN DIAMOND REPORT

June 27, 2026
IGI Report Number **LG813636038**
Description **LABORATORY GROWN DIAMOND**
Shape and Cutting Style **CUSHION BRILLIANT**
Measurements **10.74 X 7.57 X 4.76 MM**

GRADING RESULTS

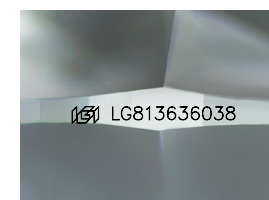
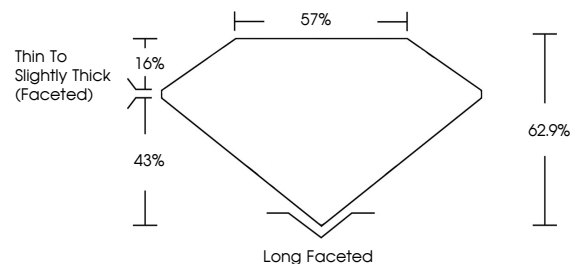
Carat Weight **3.02 CARATS**
Color Grade **FANCY BROWN**
Clarity Grade **SI 2**

ADDITIONAL GRADING INFORMATION

Polish **EXCELLENT**
Symmetry **EXCELLENT**
Fluorescence **NONE**
Inscription(s) **IGI LG813636038**

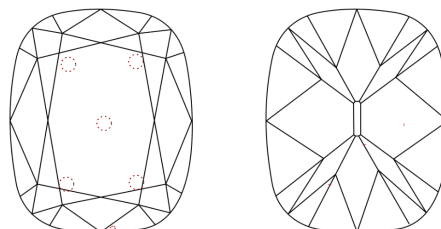
Comments: This Laboratory Grown Diamond was created by Chemical Vapor Deposition (CVD) growth process.
Indications of post-growth treatment.

PROPORTIONS



Sample Image Used

CLARITY CHARACTERISTICS



KEY TO SYMBOLS

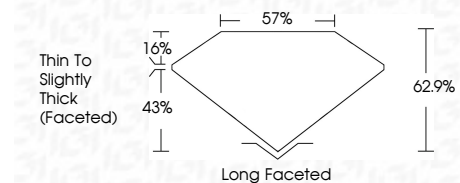
Red symbols indicate internal characteristics.
Green symbols indicate external characteristics.

COLOR

D E F G H I J Faint Very Light Light

CLARITY

FL	IF	VS ¹⁻²	VS ¹⁻²	SI ¹⁻²	I ¹⁻³
Flawless	Internally Flawless	Very Very Slightly Included	Very Slightly Included	Slightly Included	Included



ADDITIONAL GRADING INFORMATION

Polish **EXCELLENT**
Symmetry **EXCELLENT**
Fluorescence **NONE**
Inscription(s) **IGI LG813636038**
Comments: This Laboratory Grown Diamond was created by Chemical Vapor Deposition (CVD) growth process.
Indications of post-growth treatment.



June 27, 2026
IGI Report No LG813636038
CUSHION BRILLIANT
3.02 CARATS
FANCY BROWN
SI 2
10.74 X 7.57 X 4.76 MM
Color Grade
Clarity Grade
Depth
Table
Girdle
Thin To Slightly Thick (Faceted)
Long Faceted
Polish
Symmetry
Fluorescence
Inscription(s)
EXCELLENT
EXCELLENT
NONE
IGI LG813636038
Comments: This Laboratory Grown Diamond was created by Chemical Vapor Deposition (CVD) growth process.
Indications of post-growth treatment.