



**INTERNATIONAL
GEMOLOGICAL
INSTITUTE**

ELECTRONIC COPY



June 30, 2026

IGI Report Number LG813634413
ROUND BRILLIANT
LABORATORY GROWN DIAMOND
5.14 - 5.17 X 3.06 MM

Carat Weight 0.50 CARAT
Color Grade FANCY INTENSE PINK
Clarity Grade VVS 2
Cut Grade IDEAL
Polish EXCELLENT
Symmetry EXCELLENT
Fluorescence STRONG
Inscription(s) IGI LG813634413

Comments: This Laboratory Grown Diamond was created by Chemical Vapor Deposition (CVD) growth process. Indications of post-growth treatment.

LABORATORY GROWN DIAMOND REPORT

June 30, 2026
IGI Report Number **LG813634413**
Description **LABORATORY GROWN DIAMOND**
Shape and Cutting Style **ROUND BRILLIANT**
Measurements **5.14 - 5.17 X 3.06 MM**

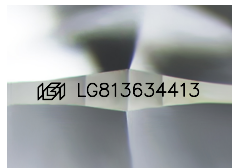
GRADING RESULTS

Carat Weight 0.50 CARAT
Color Grade FANCY INTENSE PINK
Clarity Grade VVS 2
Cut Grade IDEAL

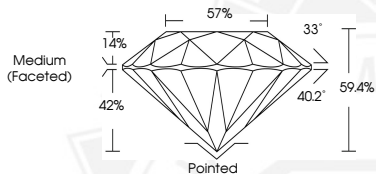
ADDITIONAL GRADING INFORMATION

Polish EXCELLENT
Symmetry EXCELLENT
Fluorescence STRONG
Inscription(s) IGI LG813634413

Comments: This Laboratory Grown Diamond was created by Chemical Vapor Deposition (CVD) growth process. Indications of post-growth treatment.



Sample Image Used



June 30, 2026

IGI Report Number LG813634413
ROUND BRILLIANT
LABORATORY GROWN DIAMOND
5.14 - 5.17 X 3.06 MM

Carat Weight 0.50 CARAT
Color Grade FANCY INTENSE PINK
Clarity Grade VVS 2
Cut Grade IDEAL
Polish EXCELLENT
Symmetry EXCELLENT
Fluorescence STRONG
Inscription(s) IGI LG813634413

Comments: This Laboratory Grown Diamond was created by Chemical Vapor Deposition (CVD) growth process. Indications of post-growth treatment.

THIS DOCUMENT WAS PRODUCED WITH THE FOLLOWING SECURITY MEASURES: SPECIAL DOCUMENT PAPER, INK SCREENS, WATERMARK, BACKGROUND DESIGNS, HOLOGRAM AND OTHER SECURITY FEATURES NOT LISTED AND DO EXCEED DOCUMENT SECURITY INDUSTRY GUIDELINES.

For terms & conditions and to verify this report, please visit www.igi.org