



June 25, 2026

**IGI Report Number LG813630595**  
**CUT CORNERED RECTANGULAR  
MODIFIED BRILLIANT**  
**LABORATORY GROWN DIAMOND**  
**6.49 X 4.54 X 2.91 MM**

**LABORATORY GROWN DIAMOND REPORT**

June 25, 2026

IGI Report Number

LG813630595

Description

LABORATORY GROWN DIAMOND

Shape and Cutting Style

CUT CORNERED RECTANGULAR MODIFIED  
BRILLIANT

Measurements

6.49 X 4.54 X 2.91 MM

**GRADING RESULTS**

Carat Weight

0.75 CARAT

Color Grade

D

Clarity Grade

VS 1

**ADDITIONAL GRADING INFORMATION**

Polish

VERY GOOD

Symmetry

EXCELLENT

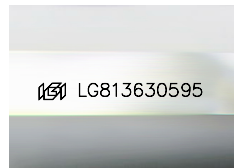
Fluorescence

NONE

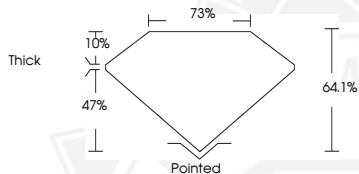
Inscription(s)

IGI LG813630595

Comments: This Laboratory Grown Diamond was created by  
Chemical Vapor Deposition (CVD) growth process.  
Type IIa



Sample Image Used



Carat Weight **0.75 CARAT**  
Color Grade **D**  
Clarity Grade **VS 1**  
Polish **VERY GOOD**  
Symmetry **EXCELLENT**  
Fluorescence **NONE**  
Inscription(s) **IGI LG813630595**

Comments: This Laboratory Grown Diamond was created by  
Chemical Vapor Deposition (CVD) growth process. Type IIa



June 25, 2026

**IGI Report Number LG813630595**  
**CUT CORNERED RECTANGULAR  
MODIFIED BRILLIANT**  
**LABORATORY GROWN DIAMOND**  
**6.49 X 4.54 X 2.91 MM**

Carat Weight **0.75 CARAT**  
Color Grade **D**  
Clarity Grade **VS 1**  
Polish **VERY GOOD**  
Symmetry **EXCELLENT**  
Fluorescence **NONE**  
Inscription(s) **IGI LG813630595**

Comments: This Laboratory Grown Diamond was created by  
Chemical Vapor Deposition (CVD) growth process. Type IIa



THIS DOCUMENT WAS PRODUCED WITH THE FOLLOWING SECURITY MEASURES: SPECIAL DOCUMENT PAPER, INK SCREENS, WATERMARK, BACKGROUND DESIGNS, HOLOGRAM AND OTHER SECURITY FEATURES NOT LISTED AND DO EXCEED DOCUMENT SECURITY INDUSTRY GUIDELINES.