



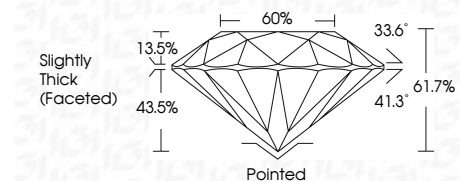
ELECTRONIC COPY

LG813627932 Report verification at igi.org



June 26, 2026 IGI Report Number LG813627932 Description LABORATORY GROWN DIAMOND Shape and Cutting Style ROUND BRILLIANT Measurements 6.42 - 6.45 X 3.97 MM

GRADING RESULTS Carat Weight 1.03 CARAT Color Grade E Clarity Grade VVS 2 Cut Grade EXCELLENT



ADDITIONAL GRADING INFORMATION Polish EXCELLENT Symmetry EXCELLENT Fluorescence NONE Inscription(s) LG813627932 Comments: This Laboratory Grown Diamond was created by Chemical Vapor Deposition (CVD) growth process. Type IIa



June 26, 2026 IGI Report No LG813627932 ROUND BRILLIANT 6.42 - 6.45 X 3.97 MM 1.03 CARAT E VVS 2 EXCELLENT 61.7% 60% Slightly Thick (Faceted) Pointed EXCELLENT EXCELLENT NONE NONE LG813627932 Comments: This Laboratory Grown Diamond was created by Chemical Vapor Deposition (CVD) growth process. Type IIa

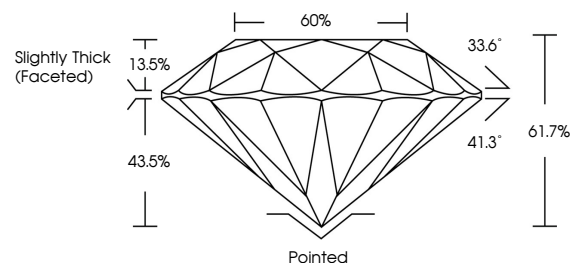
June 26, 2026 IGI Report Number LG813627932 Description LABORATORY GROWN DIAMOND Shape and Cutting Style ROUND BRILLIANT Measurements 6.42 - 6.45 X 3.97 MM

GRADING RESULTS Carat Weight 1.03 CARAT Color Grade E Clarity Grade VVS 2 Cut Grade EXCELLENT

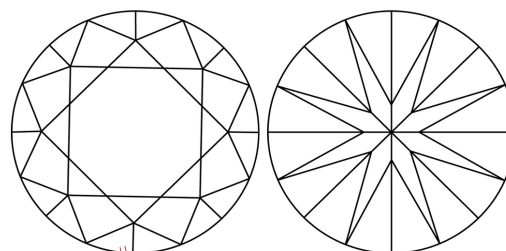
ADDITIONAL GRADING INFORMATION Polish EXCELLENT Symmetry EXCELLENT Fluorescence NONE Inscription(s) LG813627932

Comments: This Laboratory Grown Diamond was created by Chemical Vapor Deposition (CVD) growth process. Type IIa

PROPORTIONS

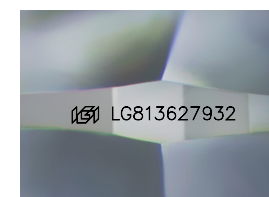


CLARITY CHARACTERISTICS



KEY TO SYMBOLS

Red symbols indicate internal characteristics. Green symbols indicate external characteristics.



Sample Image Used

COLOR

D E F G H I J Faint Very Light Light

CLARITY

FL IF VVS 1-2 VS 1-2 SI 1-2 I 1-3 Flawless Internally Flawless Very Very Slightly Included Very Slightly Included Slightly Included Included

