



**ELECTRONIC COPY**

LG813627864  
Report verification at igi.org



June 25, 2026

IGI Report Number **LG813627864**

Description **LABORATORY GROWN DIAMOND**

Shape and Cutting Style **ROUND BRILLIANT**

Measurements **6.49 - 6.52 X 3.93 MM**

**GRADING RESULTS**

Carat Weight **1.02 CARAT**

Color Grade **H**

Clarity Grade **VVS 2**

Cut Grade **EXCELLENT**

June 25, 2026  
IGI Report Number **LG813627864**  
Description **LABORATORY GROWN DIAMOND**  
Shape and Cutting Style **ROUND BRILLIANT**  
Measurements **6.49 - 6.52 X 3.93 MM**

**GRADING RESULTS**

Carat Weight **1.02 CARAT**

Color Grade **H**

Clarity Grade **VVS 2**

Cut Grade **EXCELLENT**

**ADDITIONAL GRADING INFORMATION**

Polish **EXCELLENT**

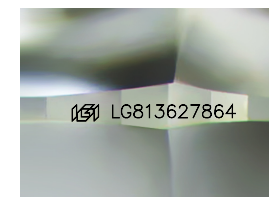
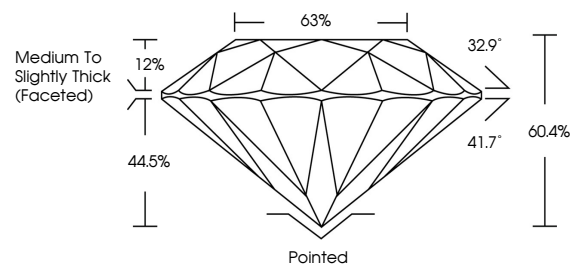
Symmetry **EXCELLENT**

Fluorescence **NONE**

Inscription(s) **LG813627864**

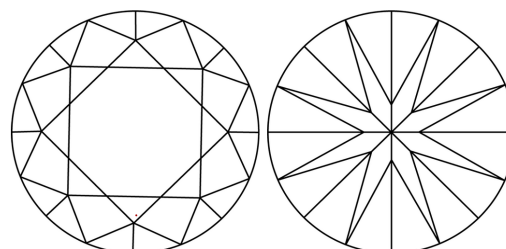
Comments: This Laboratory Grown Diamond was created by Chemical Vapor Deposition (CVD) growth process.  
Type IIa

**PROPORTIONS**



Sample Image Used

**CLARITY CHARACTERISTICS**



**KEY TO SYMBOLS**

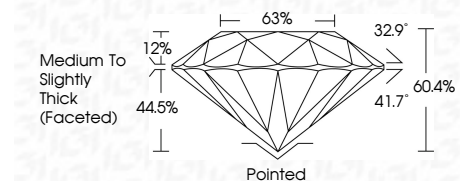
Red symbols indicate internal characteristics.  
Green symbols indicate external characteristics.

**COLOR**

D E F G H I J Faint Very Light Light

**CLARITY**

FL	IF	VVS <sup>1-2</sup>	VS <sup>1-2</sup>	SI <sup>1-2</sup>	I <sup>1-3</sup>
Flawless	Internally Flawless	Very Very Slightly Included	Very Slightly Included	Slightly Included	Included



**ADDITIONAL GRADING INFORMATION**

Polish **EXCELLENT**

Symmetry **EXCELLENT**

Fluorescence **NONE**

Inscription(s) **LG813627864**

Comments: This Laboratory Grown Diamond was created by Chemical Vapor Deposition (CVD) growth process.  
Type IIa



**IGI**



June 25, 2026  
IGI Report No LG813627864  
**ROUND BRILLIANT**  
6.49 - 6.52 X 3.93 MM  
1.02 CARAT  
H  
Color Grade **EXCELLENT**  
VVS 2  
Clarity Grade **EXCELLENT**  
60.4%  
Depth 68%  
Table  
Girdle  
Medium To Slightly Thick (Faceted)  
Pointed  
Polish **EXCELLENT**  
Symmetry **EXCELLENT**  
Fluorescence **NONE**  
Inscription(s) LG813627864  
Comments: This Laboratory Grown Diamond was created by Chemical Vapor Deposition (CVD) growth process.  
Type IIa