



ELECTRONIC COPY

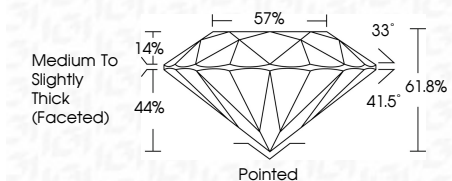
LG813625394 Report verification at igi.org



June 29, 2026 IGI Report Number LG813625394 Description LABORATORY GROWN DIAMOND Shape and Cutting Style ROUND BRILLIANT Measurements 6.59 - 6.62 X 4.08 MM

GRADING RESULTS

Carat Weight 1.09 CARAT Color Grade F Clarity Grade VVS 2 Cut Grade IDEAL



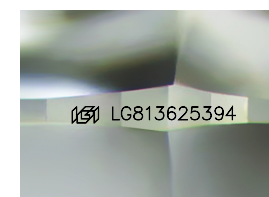
ADDITIONAL GRADING INFORMATION

Polish EXCELLENT Symmetry EXCELLENT Fluorescence NONE Inscription(s) LG813625394 Comments: This Laboratory Grown Diamond was created by Chemical Vapor Deposition (CVD) growth process. Type IIa



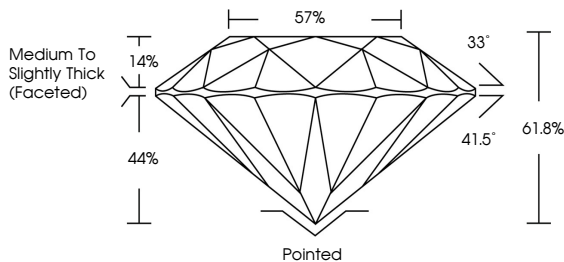
June 29, 2026 IGI Report No LG813625394 ROUND BRILLIANT 6.59 - 6.62 X 4.08 MM 1.09 CARAT F VVS 2 IDEAL 61.8% 57% Medium To Slightly Thick (Faceted) Pointed EXCELLENT EXCELLENT NONE NONE LG813625394

Comments: This Laboratory Grown Diamond was created by Chemical Vapor Deposition (CVD) growth process. Type IIa

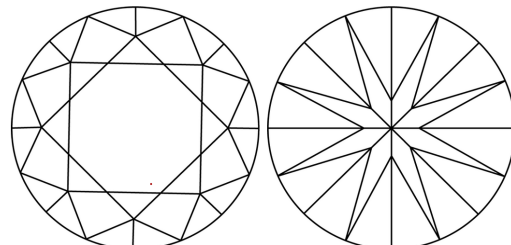


Sample Image Used

PROPORTIONS



CLARITY CHARACTERISTICS



KEY TO SYMBOLS

Red symbols indicate internal characteristics. Green symbols indicate external characteristics.

COLOR

Color scale from D to J, with Faint, Very Light, and Light labels.

CLARITY

Clarity scale from FL to I 1-3, with sub-labels: Internally Flawless, Very Very Slightly Included, Very Slightly Included, Slightly Included, Included.



June 29, 2026 IGI Report Number LG813625394 Description LABORATORY GROWN DIAMOND Shape and Cutting Style ROUND BRILLIANT Measurements 6.59 - 6.62 X 4.08 MM

GRADING RESULTS

Carat Weight 1.09 CARAT Color Grade F Clarity Grade VVS 2 Cut Grade IDEAL

ADDITIONAL GRADING INFORMATION

Polish EXCELLENT Symmetry EXCELLENT Fluorescence NONE Inscription(s) LG813625394

Comments: This Laboratory Grown Diamond was created by Chemical Vapor Deposition (CVD) growth process. Type IIa