



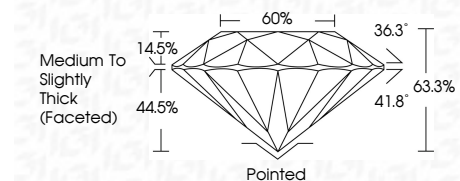
ELECTRONIC COPY

LG813617396 Report verification at igi.org



June 25, 2026 IGI Report Number LG813617396 Description LABORATORY GROWN DIAMOND Shape and Cutting Style ROUND BRILLIANT Measurements 7.24 - 7.29 X 4.60 MM

GRADING RESULTS Carat Weight 1.51 CARAT Color Grade D Clarity Grade VVS 2 Cut Grade EXCELLENT



ADDITIONAL GRADING INFORMATION Polish EXCELLENT Symmetry EXCELLENT Fluorescence NONE Inscription(s) LG813617396 Comments: This Laboratory Grown Diamond was created by Chemical Vapor Deposition (CVD) growth process. Type IIa



June 25, 2026 IGI Report No LG813617396 ROUND BRILLIANT 1.51 CARAT D VVS 2 EXCELLENT 68.3% 60% Medium To Slightly Thick (Faceted) Pointed EXCELLENT EXCELLENT NONE NONE LG813617396

LABORATORY GROWN DIAMOND REPORT

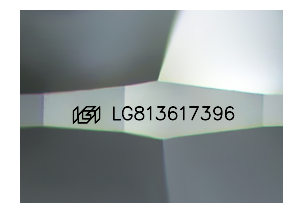
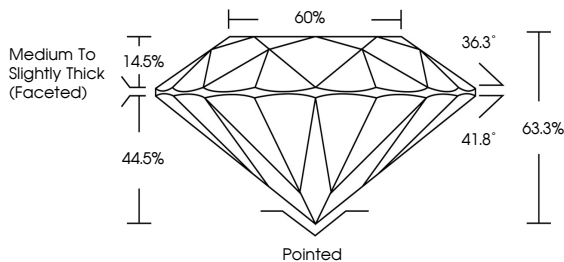
June 25, 2026 IGI Report Number LG813617396 Description LABORATORY GROWN DIAMOND Shape and Cutting Style ROUND BRILLIANT Measurements 7.24 - 7.29 X 4.60 MM

GRADING RESULTS Carat Weight 1.51 CARAT Color Grade D Clarity Grade VVS 2 Cut Grade EXCELLENT

ADDITIONAL GRADING INFORMATION Polish EXCELLENT Symmetry EXCELLENT Fluorescence NONE Inscription(s) LG813617396

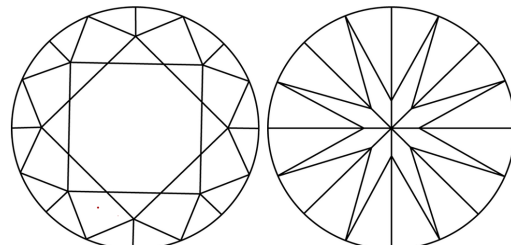
Comments: This Laboratory Grown Diamond was created by Chemical Vapor Deposition (CVD) growth process. Type IIa

PROPORTIONS



Sample Image Used

CLARITY CHARACTERISTICS



KEY TO SYMBOLS Red symbols indicate internal characteristics. Green symbols indicate external characteristics.

COLOR scale from D to Light

CLARITY scale from FL to Included

