



ELECTRONIC COPY

LABORATORY GROWN DIAMOND REPORT

June 24, 2026 IGI Report Number LG813616076 Description LABORATORY GROWN DIAMOND Shape and Cutting Style HEXAGONAL MODIFIED BRILLIANT Measurements 13.43 X 7.22 X 4.94 MM

GRADING RESULTS

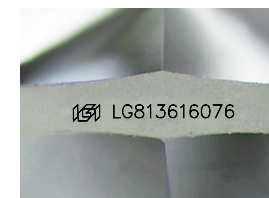
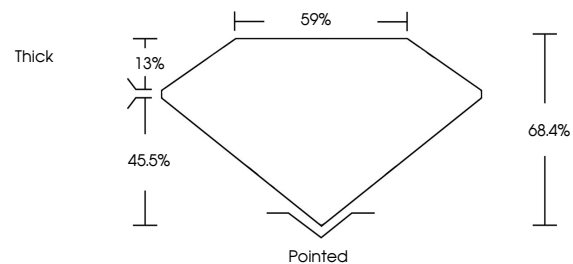
Carat Weight 3.01 CARATS Color Grade D Clarity Grade VVS 2

ADDITIONAL GRADING INFORMATION

Polish EXCELLENT Symmetry EXCELLENT Fluorescence NONE Inscription(s) IGI LG813616076

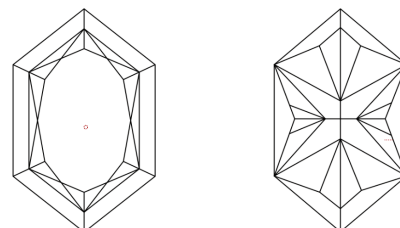
Comments: This Laboratory Grown Diamond was created by Chemical Vapor Deposition (CVD) growth process. Type IIa

PROPORTIONS



Sample Image Used

CLARITY CHARACTERISTICS



KEY TO SYMBOLS

Red symbols indicate internal characteristics. Green symbols indicate external characteristics.

COLOR

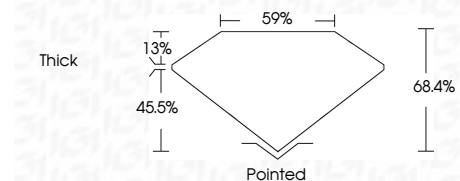
D E F G H I J Faint Very Light Light

CLARITY

FL IF VVS 1-2 VS 1-2 SI 1-2 I 1-3 Flawless Internally Flawless Very Very Slightly Included Very Slightly Included Slightly Included Included



June 24, 2026 IGI Report Number LG813616076 Description LABORATORY GROWN DIAMOND Shape and Cutting Style HEXAGONAL MODIFIED BRILLIANT Measurements 13.43 X 7.22 X 4.94 MM GRADING RESULTS Carat Weight 3.01 CARATS Color Grade D Clarity Grade VVS 2



ADDITIONAL GRADING INFORMATION

Polish EXCELLENT Symmetry EXCELLENT Fluorescence NONE Inscription(s) IGI LG813616076 Comments: This Laboratory Grown Diamond was created by Chemical Vapor Deposition (CVD) growth process. Type IIa



June 24, 2026 IGI Report No LG813616076 HEXAGONAL MODIFIED BRILLIANT 3.01 CARATS D 3.01 CARATS D VVS 2 68.4% 59% Thick Pointed EXCELLENT EXCELLENT NONE NONE IGI LG813616076 Comments: This Laboratory Grown Diamond was created by Chemical Vapor Deposition (CVD) growth process. Type IIa