



ELECTRONIC COPY

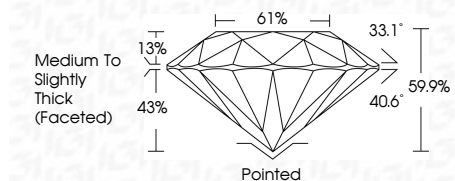
LG813614992
Report verification at igi.org



June 29, 2026
IGI Report Number **LG813614992**
Description **LABORATORY GROWN DIAMOND**
Shape and Cutting Style **ROUND BRILLIANT**
Measurements **8.13 - 8.16 X 4.89 MM**

GRADING RESULTS

Carat Weight **2.02 CARATS**
Color Grade **E**
Clarity Grade **VVS 2**
Cut Grade **EXCELLENT**

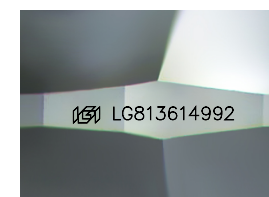


ADDITIONAL GRADING INFORMATION

Polish **EXCELLENT**
Symmetry **EXCELLENT**
Fluorescence **NONE**
Inscription(s) **IGI LG813614992**
Comments: This Laboratory Grown Diamond was created by Chemical Vapor Deposition (CVD) growth process. Type IIa

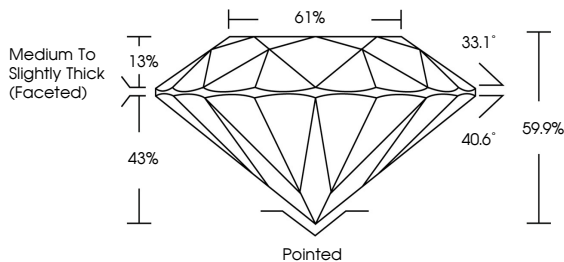


June 29, 2026
IGI Report No LG813614992
ROUND BRILLIANT
8.13 - 8.16 X 4.89 MM
2.02 CARATS
Color Grade **E**
Clarity Grade **VVS 2**
Depth **EXCELLENT**
61%
Table **Medium To Slightly Thick (Faceted)**
33.1°
Crown Angle **Pointed**
40.6°
Pavilion Angle **EXCELLENT**
61%
Table **EXCELLENT**
None
Fluorescence **NONE**
Inscriptions(s) **IGI LG813614992**
Comments: This Laboratory Grown Diamond was created by Chemical Vapor Deposition (CVD) growth process. Type IIa

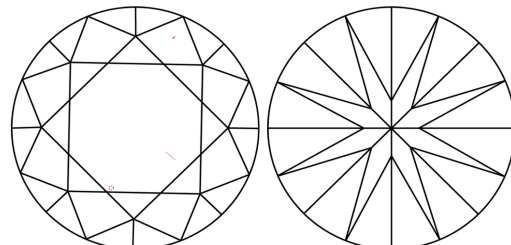


Sample Image Used

PROPORTIONS



CLARITY CHARACTERISTICS



KEY TO SYMBOLS

Red symbols indicate internal characteristics.
Green symbols indicate external characteristics.

COLOR

D	E	F	G	H	I	J	Faint	Very Light	Light
---	---	---	---	---	---	---	-------	------------	-------

CLARITY

FL	IF	VVS ¹⁻²	VS ¹⁻²	SI ¹⁻²	I ¹⁻³
Flawless	Internally Flawless	Very Very Slightly Included	Very Slightly Included	Slightly Included	Included

