



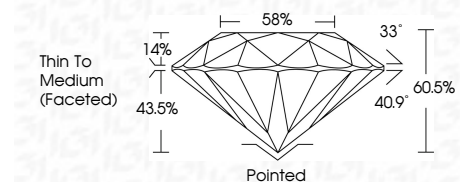
ELECTRONIC COPY

LG813614837 Report verification at igi.org



June 29, 2026 IGI Report Number LG813614837 Description LABORATORY GROWN DIAMOND Shape and Cutting Style ROUND BRILLIANT Measurements 6.51 - 6.53 X 3.95 MM

GRADING RESULTS Carat Weight 1.02 CARAT Color Grade E Clarity Grade VVS 2 Cut Grade EXCELLENT



ADDITIONAL GRADING INFORMATION Polish EXCELLENT Symmetry EXCELLENT Fluorescence NONE Inscription(s) IGI LG813614837 Comments: This Laboratory Grown Diamond was created by Chemical Vapor Deposition (CVD) growth process. Type IIa



June 29, 2026 IGI Report No LG813614837 ROUND BRILLIANT 6.51 - 6.53 X 3.95 MM 1.02 CARAT E VVS 2 EXCELLENT 60.5% 58% Thin To Medium (Faceted) Pointed EXCELLENT EXCELLENT NONE NONE IGI LG813614837 Comments: This Laboratory Grown Diamond was created by Chemical Vapor Deposition (CVD) growth process. Type IIa

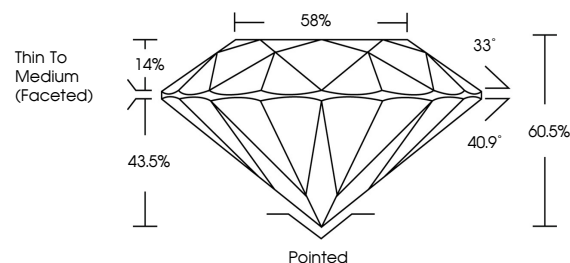
June 29, 2026 IGI Report Number LG813614837 Description LABORATORY GROWN DIAMOND Shape and Cutting Style ROUND BRILLIANT Measurements 6.51 - 6.53 X 3.95 MM

GRADING RESULTS Carat Weight 1.02 CARAT Color Grade E Clarity Grade VVS 2 Cut Grade EXCELLENT

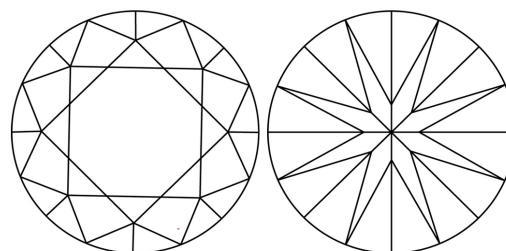
ADDITIONAL GRADING INFORMATION Polish EXCELLENT Symmetry EXCELLENT Fluorescence NONE Inscription(s) IGI LG813614837

Comments: This Laboratory Grown Diamond was created by Chemical Vapor Deposition (CVD) growth process. Type IIa

PROPORTIONS

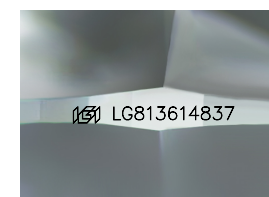


CLARITY CHARACTERISTICS



KEY TO SYMBOLS

Red symbols indicate internal characteristics. Green symbols indicate external characteristics.



Sample Image Used

COLOR

D E F G H I J Faint Very Light Light

CLARITY

FL IF VVS 1-2 VS 1-2 SI 1-2 I 1-3 Flawless Internally Flawless Very Very Slightly Included Very Slightly Included Slightly Included Included

