



**ELECTRONIC COPY**

LG813614796  
Report verification at [igi.org](http://igi.org)



June 25, 2026

IGI Report Number **LG813614796**

Description **LABORATORY GROWN DIAMOND**

Shape and Cutting Style **CUSHION BRILLIANT**

Measurements **9.97 X 6.74 X 4.40 MM**

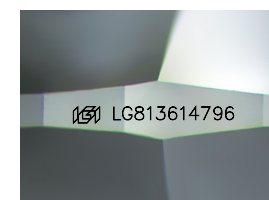
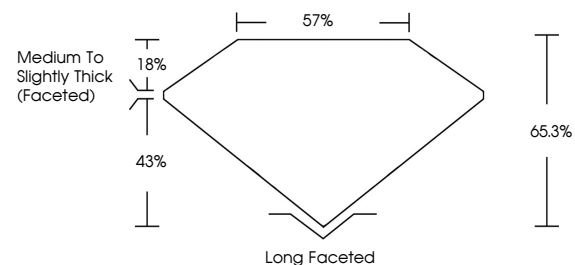
**GRADING RESULTS**

Carat Weight **2.55 CARATS**

Color Grade **F**

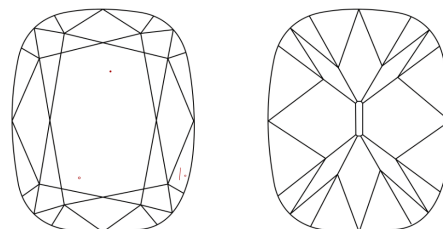
Clarity Grade **VS 1**

**PROPORTIONS**



Sample Image Used

**CLARITY CHARACTERISTICS**



**KEY TO SYMBOLS**

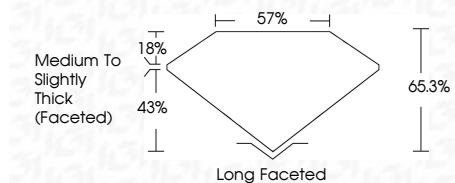
Red symbols indicate internal characteristics.  
Green symbols indicate external characteristics.

**COLOR**

D E F G H I J Faint Very Light Light

**CLARITY**

FL	IF	VS <sup>1-2</sup>	VS <sup>1-2</sup>	SI <sup>1-2</sup>	I <sup>1-3</sup>
Flawless	Internally Flawless	Very Very Slightly Included	Very Slightly Included	Slightly Included	Included



**ADDITIONAL GRADING INFORMATION**

Polish **EXCELLENT**

Symmetry **EXCELLENT**

Fluorescence **NONE**

Inscription(s) **IGI LG813614796**

Comments: This Laboratory Grown Diamond was created by Chemical Vapor Deposition (CVD) growth process. Type IIa



**IGI**



June 25, 2026  
IGI Report No LG813614796  
**CUSHION BRILLIANT**  
9.97 X 6.74 X 4.40 MM  
2.55 CARATS  
Color Grade **F**  
Clarity Grade **VS 1**  
Depth **65.3%**  
Table **57%**  
Girdle **Medium to Slightly Thick (Faceted)**  
Culet **Long Faceted**  
Polish **EXCELLENT**  
Symmetry **EXCELLENT**  
Fluorescence **NONE**  
Inscription(s) **IGI LG813614796**

Comments: This Laboratory Grown Diamond was created by Chemical Vapor Deposition (CVD) growth process. Type IIa