



ELECTRONIC COPY

LG813608541
Report verification at igi.org



June 24, 2026

IGI Report Number **LG813608541**

Description **LABORATORY GROWN DIAMOND**

Shape and Cutting Style **ROUND BRILLIANT**

Measurements **7.55 - 7.59 X 4.53 MM**

GRADING RESULTS

Carat Weight **1.60 CARAT**

Color Grade **F**

Clarity Grade **VVS 1**

Cut Grade **EXCELLENT**

June 24, 2026

IGI Report Number **LG813608541**

Description **LABORATORY GROWN DIAMOND**

Shape and Cutting Style **ROUND BRILLIANT**

Measurements **7.55 - 7.59 X 4.53 MM**

GRADING RESULTS

Carat Weight **1.60 CARAT**

Color Grade **F**

Clarity Grade **VVS 1**

Cut Grade **EXCELLENT**

ADDITIONAL GRADING INFORMATION

Polish **EXCELLENT**

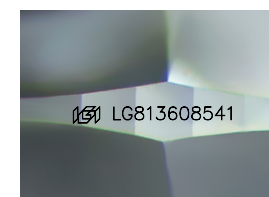
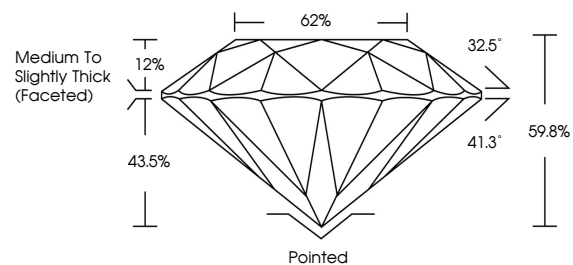
Symmetry **EXCELLENT**

Fluorescence **NONE**

Inscription(s) **IGI LG813608541**

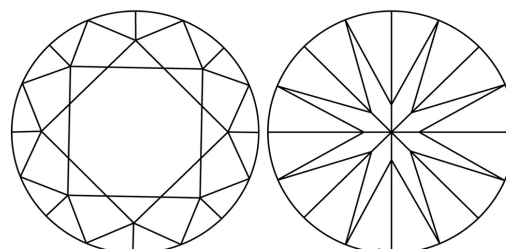
Comments: This Laboratory Grown Diamond was created by Chemical Vapor Deposition (CVD) growth process. Type IIa

PROPORTIONS



Sample Image Used

CLARITY CHARACTERISTICS



KEY TO SYMBOLS

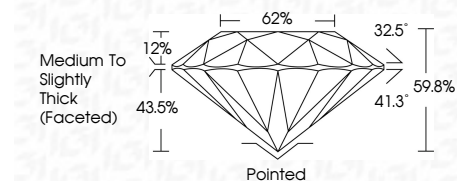
Red symbols indicate internal characteristics.
Green symbols indicate external characteristics.

COLOR

D E F G H I J Faint Very Light Light

CLARITY

FL	IF	VVS ¹⁻²	VS ¹⁻²	SI ¹⁻²	I ¹⁻³
Flawless	Internally Flawless	Very Very Slightly Included	Very Slightly Included	Slightly Included	Included



ADDITIONAL GRADING INFORMATION

Polish **EXCELLENT**

Symmetry **EXCELLENT**

Fluorescence **NONE**

Inscription(s) **IGI LG813608541**

Comments: This Laboratory Grown Diamond was created by Chemical Vapor Deposition (CVD) growth process. Type IIa



IGI



June 24, 2026
IGI Report No LG813608541
ROUND BRILLIANT

1.60 CARAT
F

7.55 - 7.59 X 4.53 MM
EXCELLENT

VVS 1
EXCELLENT

62%
Medium To Slightly Thick (Faceted)

Pointed
EXCELLENT

EXCELLENT
NONE

IGI LG813608541

Cutler
Polish
Symmetry
Fluorescence
Inscription(s)

Comments: This Laboratory Grown Diamond was created by Chemical Vapor Deposition (CVD) growth process. Type IIa