



ELECTRONIC COPY

LG813607621 Report verification at igi.org



June 26, 2026 IGI Report Number LG813607621 Description LABORATORY GROWN DIAMOND Shape and Cutting Style ROUND BRILLIANT Measurements 6.46 - 6.49 X 4.03 MM GRADING RESULTS Carat Weight 1.04 CARAT Color Grade D Clarity Grade VVS 2 Cut Grade IDEAL

June 26, 2026 IGI Report Number LG813607621 Description LABORATORY GROWN DIAMOND Shape and Cutting Style ROUND BRILLIANT Measurements 6.46 - 6.49 X 4.03 MM

GRADING RESULTS

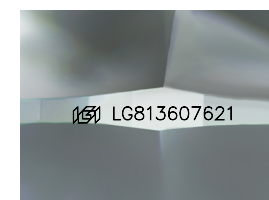
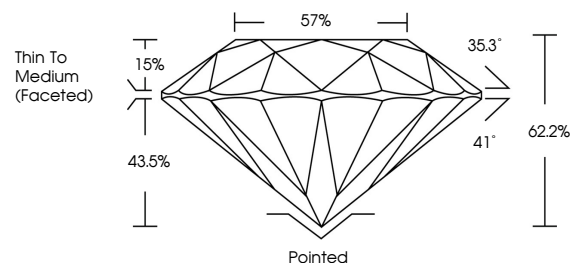
Carat Weight 1.04 CARAT Color Grade D Clarity Grade VVS 2 Cut Grade IDEAL

ADDITIONAL GRADING INFORMATION

Polish EXCELLENT Symmetry EXCELLENT Fluorescence NONE Inscription(s) LG813607621

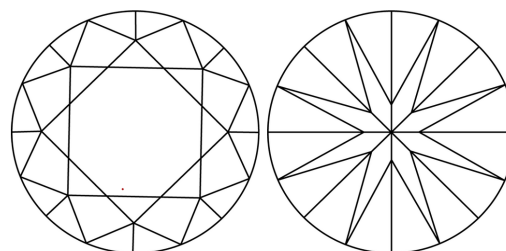
Comments: This Laboratory Grown Diamond was created by Chemical Vapor Deposition (CVD) growth process. Type IIa

PROPORTIONS



Sample Image Used

CLARITY CHARACTERISTICS



KEY TO SYMBOLS

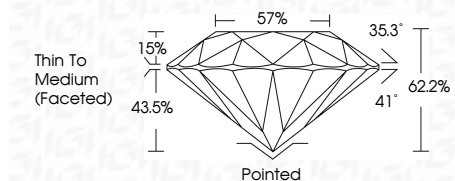
Red symbols indicate internal characteristics. Green symbols indicate external characteristics.

COLOR

D E F G H I J Faint Very Light Light

CLARITY

FL IF VVS 1-2 VS 1-2 SI 1-2 I 1-3 Flawless Internally Flawless Very Very Slightly Included Very Slightly Included Slightly Included Included



ADDITIONAL GRADING INFORMATION

Polish EXCELLENT Symmetry EXCELLENT Fluorescence NONE Inscription(s) LG813607621 Comments: This Laboratory Grown Diamond was created by Chemical Vapor Deposition (CVD) growth process. Type IIa



Table with 2 columns: Property and Value. Includes: June 26, 2026, IGI Report No LG813607621, ROUND BRILLIANT, 6.46 - 6.49 X 4.03 MM, 1.04 CARAT, D, VVS 2, IDEAL, 62.2%, 57%, Thin To Medium (Faceted), Pointed, EXCELLENT, EXCELLENT, NONE, LG813607621, Comments: This Laboratory Grown Diamond was created by Chemical Vapor Deposition (CVD) growth process. Type IIa