



**ELECTRONIC COPY**

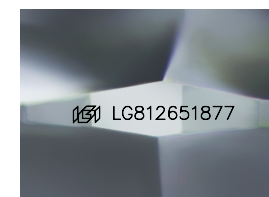
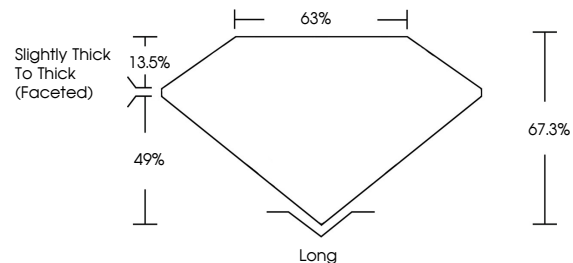
LG812651877  
Report verification at igi.org



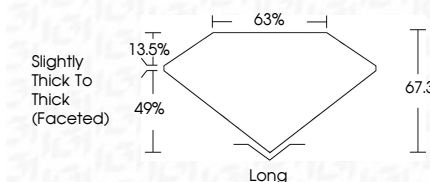
June 24, 2026  
IGI Report Number **LG812651877**  
Description **LABORATORY GROWN DIAMOND**  
Shape and Cutting Style **CUSHION MIXED CUT**  
Measurements **10.46 X 7.38 X 4.97 MM**  
**GRADING RESULTS**  
Carat Weight **3.71 CARATS**  
Color Grade **F**  
Clarity Grade **VVS 2**

June 24, 2026  
IGI Report Number **LG812651877**  
Description **LABORATORY GROWN DIAMOND**  
Shape and Cutting Style **CUSHION MIXED CUT**  
Measurements **10.46 X 7.38 X 4.97 MM**  
**GRADING RESULTS**  
Carat Weight **3.71 CARATS**  
Color Grade **F**  
Clarity Grade **VVS 2**

**PROPORTIONS**



Sample Image Used



**ADDITIONAL GRADING INFORMATION**  
Polish **EXCELLENT**  
Symmetry **EXCELLENT**  
Fluorescence **NONE**  
Inscription(s) **IGI LG812651877**

Comments: This Laboratory Grown Diamond was created by Chemical Vapor Deposition (CVD) growth process.  
Type IIa

**COLOR**

D E F G H I J Faint Very Light Light

**CLARITY**

| FL       | IF                  | VS <sup>1-2</sup>           | VS <sup>1-2</sup>      | SI <sup>1-2</sup> | I <sup>1-3</sup> |
|----------|---------------------|-----------------------------|------------------------|-------------------|------------------|
| Flawless | Internally Flawless | Very Very Slightly Included | Very Slightly Included | Slightly Included | Included         |

**ADDITIONAL GRADING INFORMATION**

Polish **EXCELLENT**  
Symmetry **EXCELLENT**  
Fluorescence **NONE**  
Inscription(s) **IGI LG812651877**  
Comments: This Laboratory Grown Diamond was created by Chemical Vapor Deposition (CVD) growth process.  
Type IIa



**IGI**



June 24, 2026  
IGI Report No LG812651877  
**CUSHION MIXED CUT**  
10.46 X 7.38 X 4.97 MM  
3.71 CARATS  
F  
VVS 2  
67.3%  
63%  
Slightly Thick To Thick (Faceted)  
Long  
EXCELLENT  
EXCELLENT  
NONE  
IGI LG812651877  
Comments: This Laboratory Grown Diamond was created by Chemical Vapor Deposition (CVD) growth process.  
Type IIa