



ELECTRONIC COPY

LG812651851
Report verification at igi.org



June 29, 2026

IGI Report Number **LG812651851**

Description **LABORATORY GROWN DIAMOND**

Shape and Cutting Style **CUSHION BRILLIANT**

Measurements **11.09 X 8.17 X 5.14 MM**

GRADING RESULTS

Carat Weight **3.60 CARATS**

Color Grade **FANCY BROWN**

Clarity Grade **VVS 2**

June 29, 2026
IGI Report Number **LG812651851**
Description **LABORATORY GROWN DIAMOND**
Shape and Cutting Style **CUSHION BRILLIANT**
Measurements **11.09 X 8.17 X 5.14 MM**

GRADING RESULTS

Carat Weight **3.60 CARATS**

Color Grade **FANCY BROWN**

Clarity Grade **VVS 2**

ADDITIONAL GRADING INFORMATION

Polish **EXCELLENT**

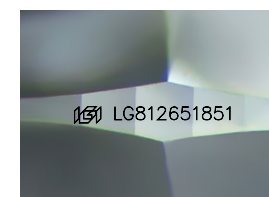
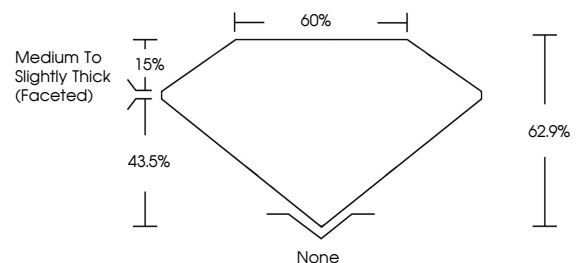
Symmetry **EXCELLENT**

Fluorescence **NONE**

Inscription(s) **IGI LG812651851**

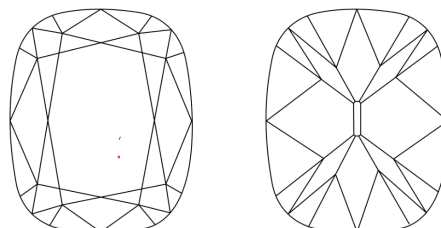
Comments: This Laboratory Grown Diamond was created by Chemical Vapor Deposition (CVD) growth process.
Indications of post-growth treatment.

PROPORTIONS



Sample Image Used

CLARITY CHARACTERISTICS



KEY TO SYMBOLS

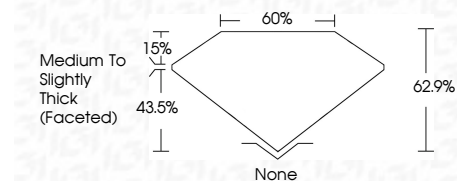
Red symbols indicate internal characteristics.
Green symbols indicate external characteristics.

COLOR

D E F G H I J Faint Very Light Light

CLARITY

FL	IF	VVS ¹⁻²	VS ¹⁻²	SI ¹⁻²	I ¹⁻³
Flawless	Internally Flawless	Very Very Slightly Included	Very Slightly Included	Slightly Included	Included



ADDITIONAL GRADING INFORMATION

Polish **EXCELLENT**

Symmetry **EXCELLENT**

Fluorescence **NONE**

Inscription(s) **IGI LG812651851**

Comments: This Laboratory Grown Diamond was created by Chemical Vapor Deposition (CVD) growth process.
Indications of post-growth treatment.



June 29, 2026
IGI Report No LG812651851
CUSHION BRILLIANT
3.60 CARATS
FANCY BROWN
VVS 2
62.9%
60%
Medium to Slightly Thick (Faceted)
None
None
EXCELLENT
EXCELLENT
NONE
None
IGI LG812651851

Comments: This Laboratory Grown Diamond was created by Chemical Vapor Deposition (CVD) growth process.
Indications of post-growth treatment.