



ELECTRONIC COPY

LG812651569
Report verification at igi.org



June 24, 2026

IGI Report Number **LG812651569**

Description **LABORATORY GROWN DIAMOND**

Shape and Cutting Style **BAGUETTE**

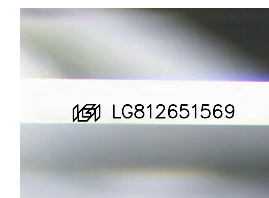
Measurements **11.20 X 3.79 X 2.30 MM**

GRADING RESULTS

Carat Weight **1.01 CARAT**

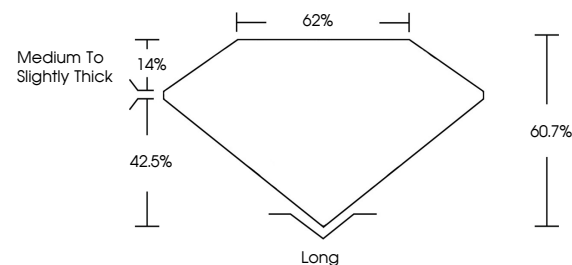
Color Grade **E**

Clarity Grade **VVS 1**

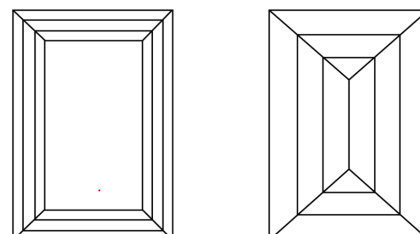


Sample Image Used

PROPORTIONS



CLARITY CHARACTERISTICS



KEY TO SYMBOLS

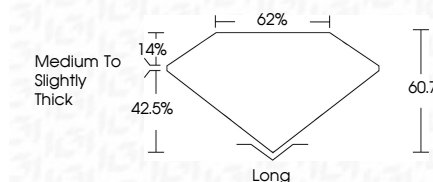
Red symbols indicate internal characteristics.
Green symbols indicate external characteristics.

COLOR

D E F G H I J Faint Very Light Light

CLARITY

FL	IF	VVS ¹⁻²	VS ¹⁻²	SI ¹⁻²	I ¹⁻³
Flawless	Internally Flawless	Very Very Slightly Included	Very Slightly Included	Slightly Included	Included



ADDITIONAL GRADING INFORMATION

Polish **EXCELLENT**

Symmetry **EXCELLENT**

Fluorescence **NONE**

Inscription(s) **IGI LG812651569**

Comments: This Laboratory Grown Diamond was created by Chemical Vapor Deposition (CVD) growth process. Type IIa



IGI



June 24, 2026
IGI Report No LG812651569
BAGUETTE

11.20 X 3.79 X 2.30 MM

1.01 CARAT
E

VVS 1
60.7%
62%

Medium to Slightly Thick

Long
EXCELLENT
EXCELLENT
NONE
IGI LG812651569

Comments: This Laboratory Grown Diamond was created by Chemical Vapor Deposition (CVD) growth process. Type IIa