



ELECTRONIC COPY

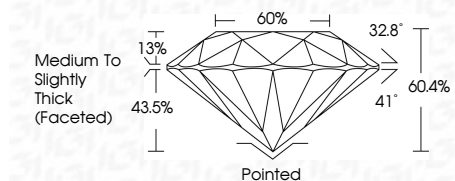
LG812631737
Report verification at igi.org



June 26, 2026
IGI Report Number LG812631737
Description LABORATORY GROWN DIAMOND
Shape and Cutting Style ROUND BRILLIANT
Measurements 7.39 - 7.41 X 4.47 MM

GRADING RESULTS

Carat Weight 1.51 CARAT
Color Grade E
Clarity Grade VVS 1
Cut Grade IDEAL

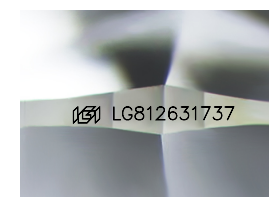


ADDITIONAL GRADING INFORMATION

Polish EXCELLENT
Symmetry EXCELLENT
Fluorescence NONE
Inscription(s) IGI LG812631737
Comments: This Laboratory Grown Diamond was created by Chemical Vapor Deposition (CVD) growth process. Type IIa

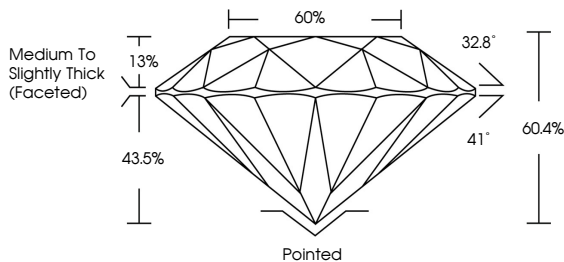


June 26, 2026
IGI Report No LG812631737
ROUND BRILLIANT
1.51 CARAT E
7.39 - 7.41 X 4.47 MM
Carat Weight
Color Grade VVS 1 IDEAL
Clarity Grade VVS 1 IDEAL
Depth 60.4%
Table 60%
Medium To Slightly Thick (Faceted)
Girdle
Culet Pointed
Polish EXCELLENT
Symmetry EXCELLENT
Fluorescence NONE
Inscription(s) IGI LG812631737
Comments: This Laboratory Grown Diamond was created by Chemical Vapor Deposition (CVD) growth process. Type IIa

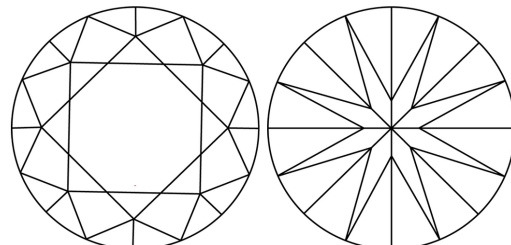


Sample Image Used

PROPORTIONS



CLARITY CHARACTERISTICS



KEY TO SYMBOLS

Red symbols indicate internal characteristics.
Green symbols indicate external characteristics.

COLOR

Table with color scale: D, E, F, G, H, I, J, Faint, Very Light, Light

CLARITY

Table with clarity scale: FL, IF, VVS 1-2, VS 1-2, SI 1-2, I 1-3

