



**ELECTRONIC COPY**

LG812631071  
Report verification at igi.org



June 23, 2026  
IGI Report Number **LG812631071**  
Description **LABORATORY GROWN DIAMOND**  
Shape and Cutting Style **MODIFIED HEXAGONAL MIXED CUT**  
Measurements **10.33 X 5.91 X 3.71 MM**  
**GRADING RESULTS**  
Carat Weight **1.50 CARAT**  
Color Grade **E**  
Clarity Grade **VVS 2**

**LABORATORY GROWN DIAMOND REPORT**

June 23, 2026  
IGI Report Number **LG812631071**  
Description **LABORATORY GROWN DIAMOND**  
Shape and Cutting Style **MODIFIED HEXAGONAL MIXED CUT**  
Measurements **10.33 X 5.91 X 3.71 MM**

**GRADING RESULTS**

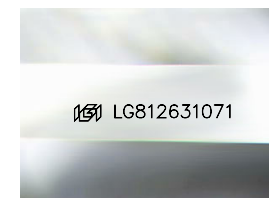
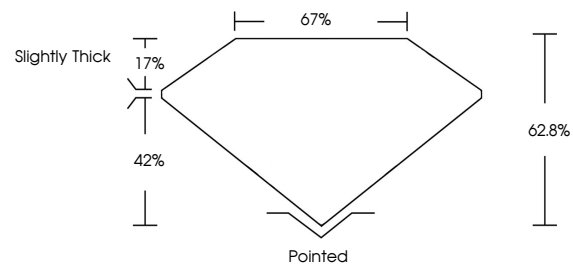
Carat Weight **1.50 CARAT**  
Color Grade **E**  
Clarity Grade **VVS 2**

**ADDITIONAL GRADING INFORMATION**

Polish **EXCELLENT**  
Symmetry **EXCELLENT**  
Fluorescence **NONE**  
Inscription(s) **IGI LG812631071**

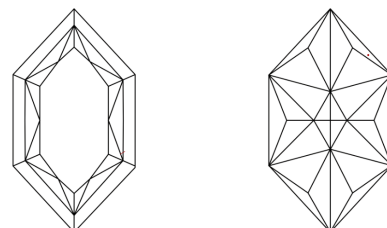
Comments: This Laboratory Grown Diamond was created by Chemical Vapor Deposition (CVD) growth process.  
Type IIa

**PROPORTIONS**



Sample Image Used

**CLARITY CHARACTERISTICS**



**KEY TO SYMBOLS**

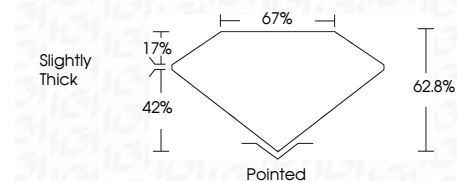
Red symbols indicate internal characteristics.  
Green symbols indicate external characteristics.

**COLOR**

D E F G H I J Faint Very Light Light

**CLARITY**

FL	IF	VVS <sup>1-2</sup>	VS <sup>1-2</sup>	SI <sup>1-2</sup>	I <sup>1-3</sup>
Flawless	Internally Flawless	Very Very Slightly Included	Very Slightly Included	Slightly Included	Included



**ADDITIONAL GRADING INFORMATION**

Polish **EXCELLENT**  
Symmetry **EXCELLENT**  
Fluorescence **NONE**  
Inscription(s) **IGI LG812631071**  
Comments: This Laboratory Grown Diamond was created by Chemical Vapor Deposition (CVD) growth process.  
Type IIa



June 23, 2026  
IGI Report No LG812631071  
MODIFIED HEXAGONAL MIXED CUT  
10.33 X 5.91 X 3.71 MM  
1.50 CARAT  
E  
VVS 2  
62.8%  
17%  
67%  
Slightly Thick  
Pointed  
EXCELLENT  
EXCELLENT  
NONE  
IGI LG812631071  
Comments: This Laboratory Grown Diamond was created by Chemical Vapor Deposition (CVD) growth process.  
Type IIa