



ELECTRONIC COPY

LG812628928
Report verification at igi.org



June 23, 2026
IGI Report Number **LG812628928**
Description **LABORATORY GROWN DIAMOND**
Shape and Cutting Style **ROUND BRILLIANT**
Measurements **7.32 - 7.36 X 4.56 MM**
GRADING RESULTS
Carat Weight **1.52 CARAT**
Color Grade **D**
Clarity Grade **INTERNALLY FLAWLESS**
Cut Grade **IDEAL**

June 23, 2026
IGI Report Number **LG812628928**
Description **LABORATORY GROWN DIAMOND**
Shape and Cutting Style **ROUND BRILLIANT**
Measurements **7.32 - 7.36 X 4.56 MM**

GRADING RESULTS

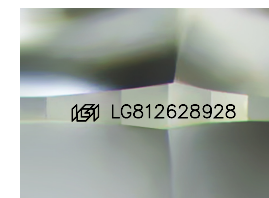
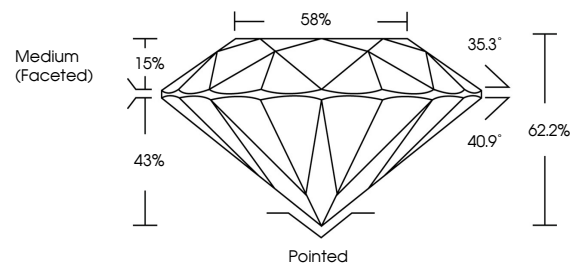
Carat Weight **1.52 CARAT**
Color Grade **D**
Clarity Grade **INTERNALLY FLAWLESS**
Cut Grade **IDEAL**

ADDITIONAL GRADING INFORMATION

Polish **EXCELLENT**
Symmetry **EXCELLENT**
Fluorescence **NONE**
Inscription(s) **IGI LG812628928**

Comments: As Grown - No indication of post-growth treatment.
This Laboratory Grown Diamond was created by High Pressure High Temperature (HPHT) growth process.
Type II

PROPORTIONS



Sample Image Used

CLARITY CHARACTERISTICS



KEY TO SYMBOLS

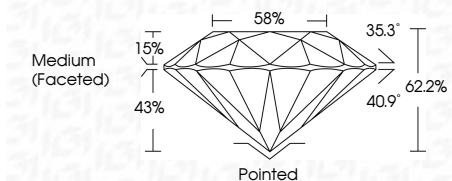
Red symbols indicate internal characteristics.
Green symbols indicate external characteristics.

COLOR

D E F G H I J Faint Very Light Light

CLARITY

FL	IF	VS ¹⁻²	VS ¹⁻²	SI ¹⁻²	I ¹⁻³
Flawless	Internally Flawless	Very Very Slightly Included	Very Slightly Included	Slightly Included	Included



ADDITIONAL GRADING INFORMATION

Polish **EXCELLENT**
Symmetry **EXCELLENT**
Fluorescence **NONE**
Inscription(s) **IGI LG812628928**
Comments: As Grown - No indication of post-growth treatment.
This Laboratory Grown Diamond was created by High Pressure High Temperature (HPHT) growth process.
Type II



IGI



June 23, 2026
IGI Report No LG812628928
ROUND BRILLIANT
7.32 - 7.36 X 4.56 MM
1.52 CARAT
D
Color Grade
Clarity Grade
Cut Grade
Depth
Table
Girdle
Medium (Faceted)
88%
Culet
Pointed
Polish
EXCELLENT
Symmetry
EXCELLENT
Fluorescence
NONE
Inscription(s)
IGI LG812628928
Comments:
As Grown - No indication of post-growth treatment.
This Laboratory Grown Diamond was created by High Pressure High Temperature (HPHT) growth process.
Type II