



ELECTRONIC COPY

LG812628762 Report verification at igi.org



June 24, 2026 IGI Report Number LG812628762 Description LABORATORY GROWN DIAMOND Shape and Cutting Style CUT CORNERED RECTANGULAR MODIFIED BRILLIANT Measurements 9.23 X 7.52 X 5.11 MM GRADING RESULTS Carat Weight 3.04 CARATS Color Grade H Clarity Grade VS 1

June 24, 2026 IGI Report Number LG812628762 Description LABORATORY GROWN DIAMOND Shape and Cutting Style CUT CORNERED RECTANGULAR MODIFIED BRILLIANT Measurements 9.23 X 7.52 X 5.11 MM

GRADING RESULTS

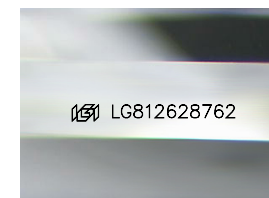
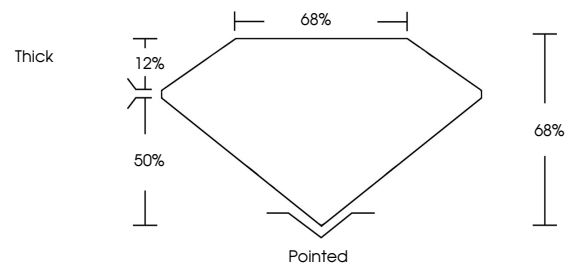
Carat Weight 3.04 CARATS Color Grade H Clarity Grade VS 1

ADDITIONAL GRADING INFORMATION

Polish EXCELLENT Symmetry EXCELLENT Fluorescence NONE Inscription(s) LG812628762

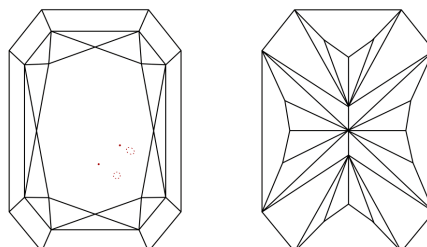
Comments: This Laboratory Grown Diamond was created by Chemical Vapor Deposition (CVD) growth process. Type IIa

PROPORTIONS



Sample Image Used

CLARITY CHARACTERISTICS



KEY TO SYMBOLS

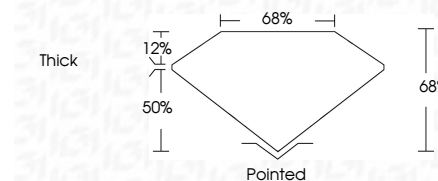
Red symbols indicate internal characteristics. Green symbols indicate external characteristics.

COLOR

D E F G H I J Faint Very Light Light

CLARITY

FL IF VS 1-2 VS 2-3 SI 1-2 I 1-3 Flawless Internally Flawless Very Very Slightly Included Very Slightly Included Slightly Included Included



ADDITIONAL GRADING INFORMATION

Polish EXCELLENT Symmetry EXCELLENT Fluorescence NONE Inscription(s) LG812628762 Comments: This Laboratory Grown Diamond was created by Chemical Vapor Deposition (CVD) growth process. Type IIa



June 24, 2026 IGI Report No LG812628762 CUT CORNERED RECT. MODIFIED BRILLIANT 9.23 X 7.52 X 5.11 MM 3.04 CARATS H VS 1 68% 68% Thick Pointed EXCELLENT EXCELLENT NONE NONE LG812628762 Comments: This Laboratory Grown Diamond was created by Chemical Vapor Deposition (CVD) growth process. Type IIa