



ELECTRONIC COPY

LG812628005 Report verification at igi.org



June 25, 2026 IGI Report Number LG812628005 Description LABORATORY GROWN DIAMOND Shape and Cutting Style SQUARE CUSHION MODIFIED BRILLIANT Measurements 21.28 X 20.90 X 13.30 MM GRADING RESULTS Carat Weight 57.00 CARATS Color Grade FANCY INTENSE PINK Clarity Grade VS 2

LABORATORY GROWN DIAMOND REPORT

June 25, 2026 IGI Report Number LG812628005 Description LABORATORY GROWN DIAMOND Shape and Cutting Style SQUARE CUSHION MODIFIED BRILLIANT Measurements 21.28 X 20.90 X 13.30 MM

GRADING RESULTS

Carat Weight 57.00 CARATS Color Grade FANCY INTENSE PINK Clarity Grade VS 2

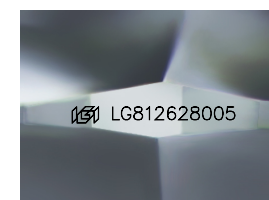
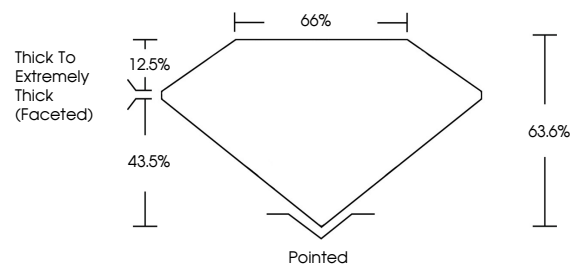
ADDITIONAL GRADING INFORMATION

Polish EXCELLENT Symmetry EXCELLENT Fluorescence SLIGHT Inscription(s) LG812628005

Comments: This Laboratory Grown Diamond was created by Chemical Vapor Deposition (CVD) growth process. Indications of post-growth treatment.

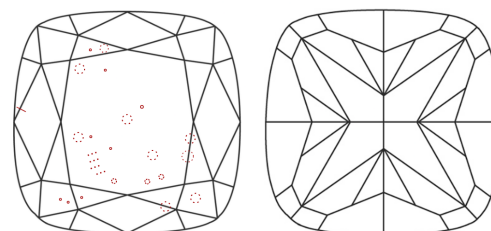
Secondary color: Brown

PROPORTIONS



Sample Image Used

CLARITY CHARACTERISTICS



KEY TO SYMBOLS

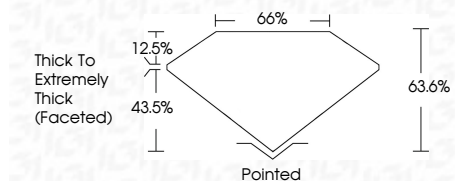
Red symbols indicate internal characteristics. Green symbols indicate external characteristics.

COLOR

D E F G H I J Faint Very Light Light

CLARITY

FL IF VS 1-2 VS 1-2 SI 1-2 I 1-3 Flawless Internally Flawless Very Very Slightly Included Very Slightly Included Slightly Included Included



ADDITIONAL GRADING INFORMATION

Polish EXCELLENT Symmetry EXCELLENT Fluorescence SLIGHT Inscription(s) LG812628005 Comments: This Laboratory Grown Diamond was created by Chemical Vapor Deposition (CVD) growth process. Indications of post-growth treatment. Secondary color: Brown



June 25, 2026 IGI Report No LG812628005 SQUARE CUSHION MODIFIED BRILLIANT 21.28 X 20.90 X 13.30 MM 57.00 CARATS FANCY INTENSE PINK VS 2 63.6% 65% Thick To Extremely Thick (Faceted) Pointed EXCELLENT EXCELLENT SLIGHT LG812628005 Comments: This Laboratory Grown Diamond was created by Chemical Vapor Deposition (CVD) growth process. Indications of post-growth treatment. Secondary color: Brown